

9290 BOND

OVERLAND PARK, KANSAS 66214

OFFICE SPACE FOR LEASE | 1,618± SF AVAILABLE



KESSINGER HUNTER
commercial real estate

CONGLETON OFFICE BUILDING

PROPERTY FEATURES

- Parking ratio 4/1,000 SF
- Will "turn-key" all availabilities
- Great access and visibility
- Signage available
- Near retail and restaurants
- **Newly-renovated Common Areas**



ADDITIONAL INFO

LEASE RATE	\$17.50 PSF Full Service
TIMING	Immediately
SUITE	205 - 1,618± SF

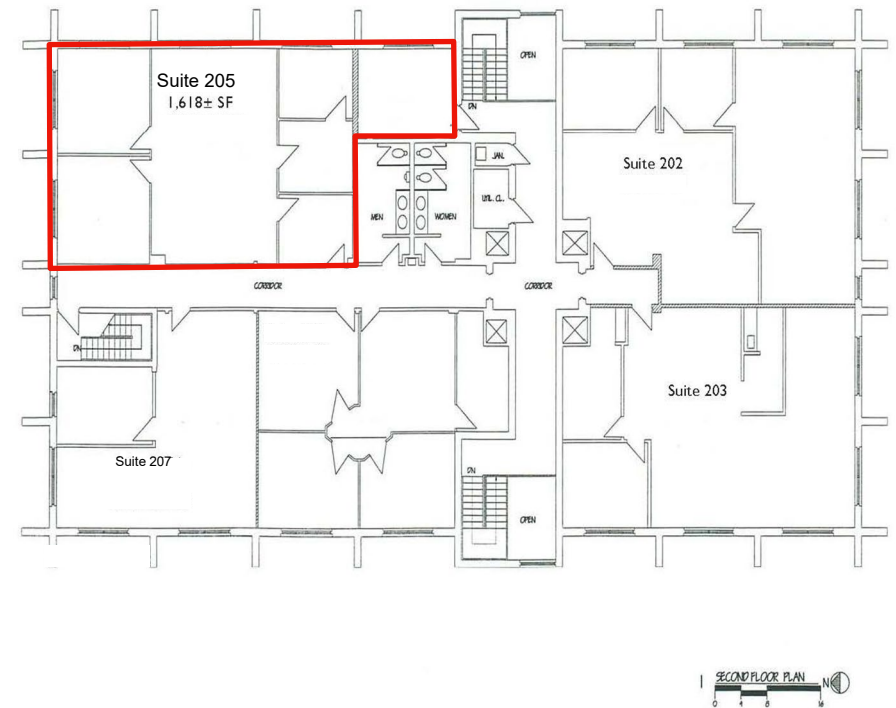
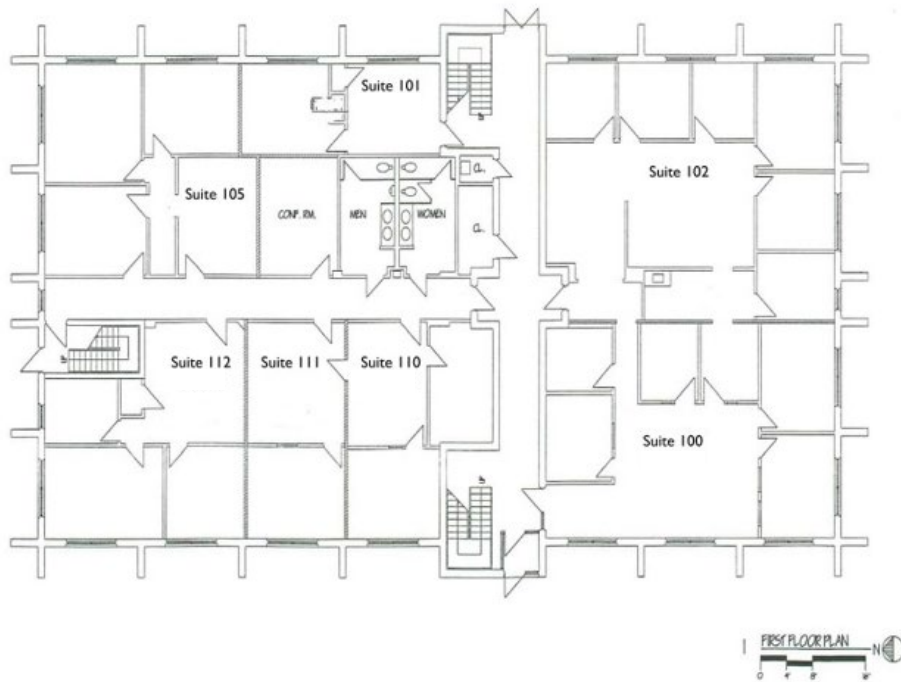
For more information, please contact:

TOM WARD
Principal, Office Specialist
913.706.7520
tward@kessingerhunter.com

KESSINGER/HUNTER & COMPANY, LC
2600 Grand Boulevard, Suite 700
Kansas City, MO 64108
816.842.2690
www.kessingerhunter.com

9290 BOND, OVERLAND PARK, KANSAS 66214

Office Space for Lease



For more information, please contact:

TOM WARD
Principal, Office Specialist
913.706.7520
tward@kessingerhunter.com

KESSINGER/HUNTER & COMPANY, LC
2600 Grand Boulevard, Suite 700
Kansas City, MO 64108
816.842.2690
www.kessingerhunter.com