

CORPORATE WOODS | BUILDING 11

10875 Benson Drive

Overland Park, Kansas 66210

OFFICE FOR LEASE | 1,200-4,192± RSF

est. 1879

KH

KESSINGER HUNTER
commercial real estate



RENTABLE BUILDING AREA	20,568 RSF
BASE RENTAL RATE	\$21.50 PRSF
LEASE TYPE	Full Service Gross

BUILDING FEATURES

- Located just off the I-435/Antioch exchange at Indian Creek Parkway/ Antioch main entrance to Corporate Woods Office Park
- 4/1,000 RSF parking
- Local ownership
- Google Fiber

SUITES AVAILABLE

Suite 250 - 4,192± RSF (Divisible to 1,200 RSF)

FOR MORE INFORMATION, PLEASE CONTACT:

DEBBIE SCHULTE, SIOR

Principal, Office Brokerage

816.936.8549

dschulte@kessingerhunter.com

KESSINGER/HUNTER & COMPANY, LC

2600 Grand Boulevard, Suite 700

Kansas City, MO 64108

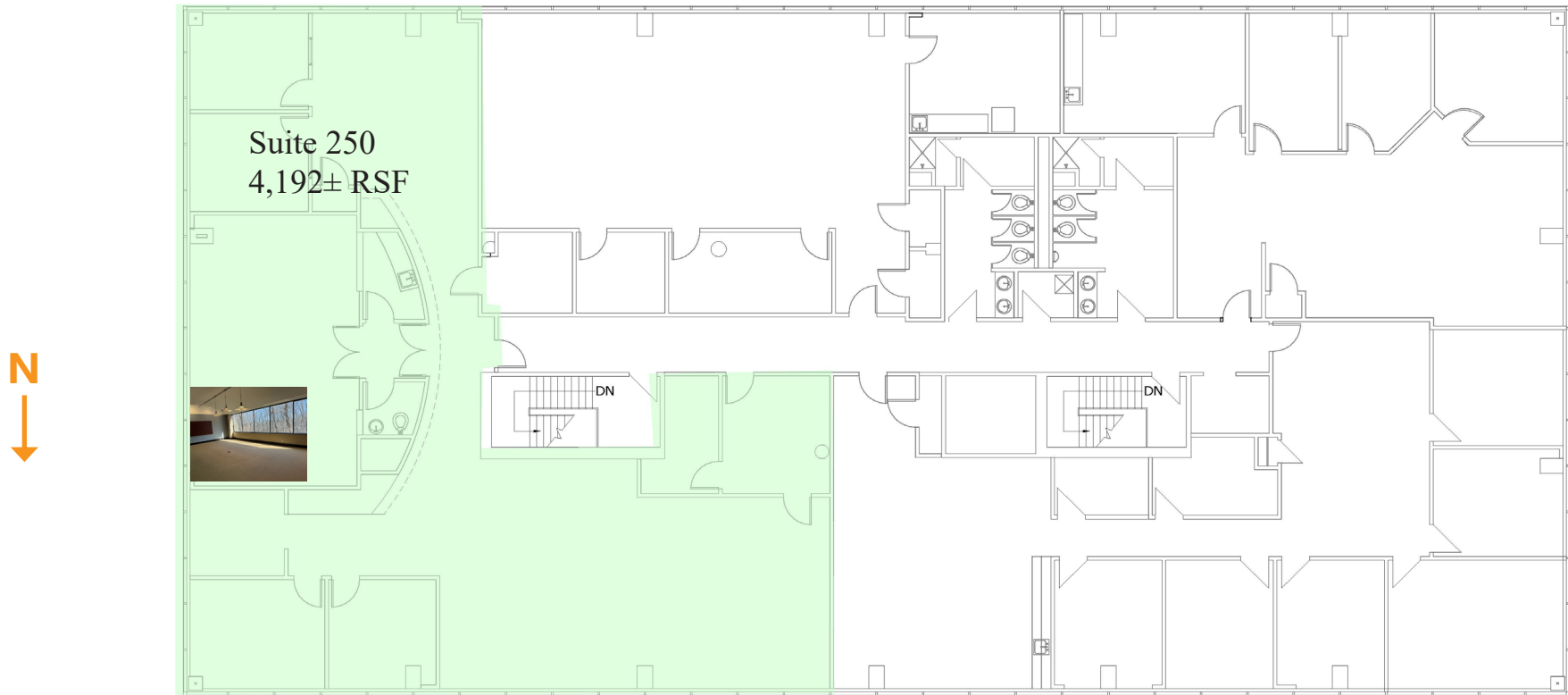
816.842.2690

www.kessingerhunter.com

10875 BENSON DRIVE, OVERLAND PARK, KANSAS 66210

Office for Lease | 1,200-4,192± RSF

2nd Floor



FOR MORE INFORMATION, PLEASE CONTACT:

DEBBIE SCHULTE, SIOR

Principal, Office Brokerage

816.936.8549

dschulte@kessingerhunter.com

KESSINGER/HUNTER & COMPANY, LC

2600 Grand Boulevard, Suite 700 | Kansas City, MO 64108

816.842.2690

kessingerhunter.com

Information subject to verification and no liability for errors or omissions is assumed. Price subject to change.

