

4750 W. 135TH STREET
LEAWOOD, KANSAS 66224

OFFICE/RETAIL FOR LEASE | 2,560± SF AVAILABLE FOR LEASE

KH EST. 1879 **Kessinger
Hunter**
COMMERCIAL REAL ESTATE
INDEPENDENTLY OWNED AND OPERATED

PROPERTY FEATURES

- Frontage in high-profile Leawood at 135th & Roe
- Join Romanelli Optix, endcap space ideal for retail or office tenant
- Signage available on both sides of the building
- New lease rate: \$17.50 PSF, NNN

DEMOGRAPHICS	1 MILE	3 MILE	5 MILE
ESTIMATED POPULATION	9,864	74,213	164,617
EST. HOUSEHOLD INCOME	\$196,658	\$173,378	\$148,946



For more information, please contact:

THOMAS F. WARD

Office Brokerage

816.936.8527

tward@kessingerhunter.com

KESSINGER/HUNTER & COMPANY, LC

2600 Grand Boulevard, Suite 700

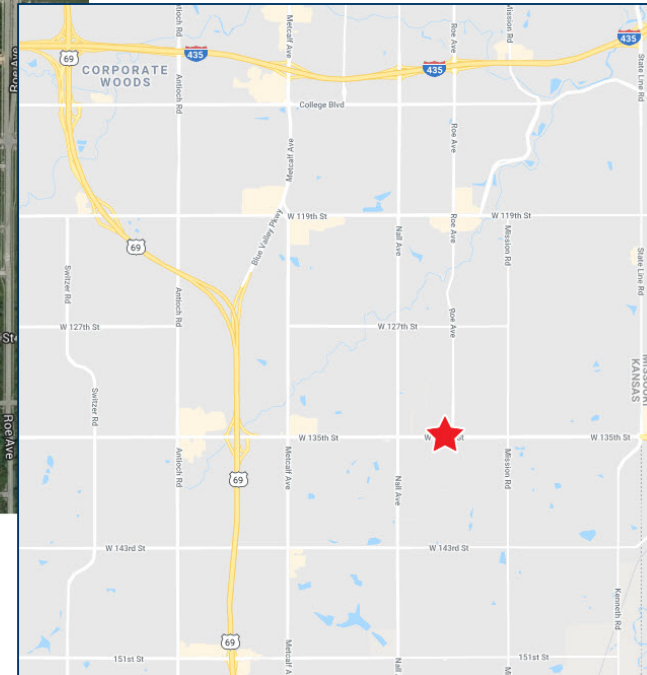
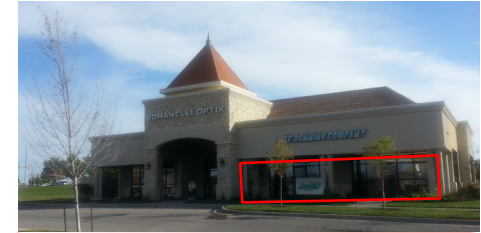
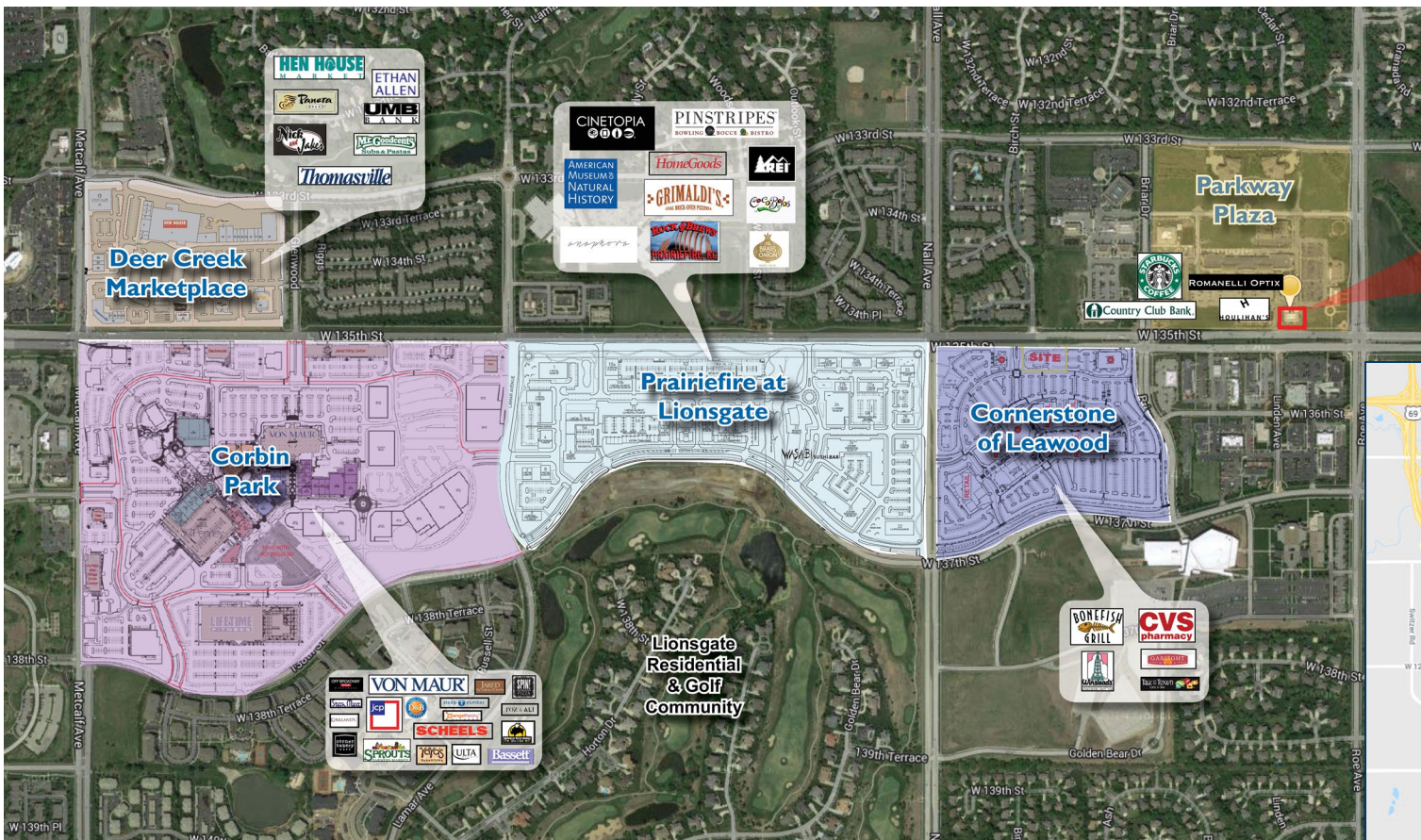
Kansas City, MO 64108

816.842.2690

www.kessingerhunter.com

4750 W. 135TH STREET, LEAWOOD, KANSAS 66224

Office/Retail for Lease



For more information, please contact:

THOMAS F. WARD
Office Brokerage
816.936.8527
tward@kessingerhunter.com

KESSINGER/HUNTER & COMPANY, LC
2600 Grand Boulevard, Suite 700
Kansas City, MO 64108
816.842.2690
www.kessingerhunter.com

Information subject to verification and no liability for errors or omissions is assumed. Price subject to change.
To unsubscribe, please click on the link: khlistings@kessingerhunter.com