

5004-5022 HADLEY STREET OVERLAND PARK, KANSAS 66203

FOR LEASE | 1,800-10,640± SF



KESSINGER HUNTER
commercial real estate

PROPERTY FEATURES

- Great Central Location
- Dock-High and Drive-In Loading
- Divisible
- 100% HVAC
- Easy I-35 Access via Antioch

ADDITIONAL INFO

LEASE RATE	\$6.00 PSF Net
CAM	\$0.39 PSF
INSURANCE	\$0.24 PSF
TAXES	\$1.04 PSF



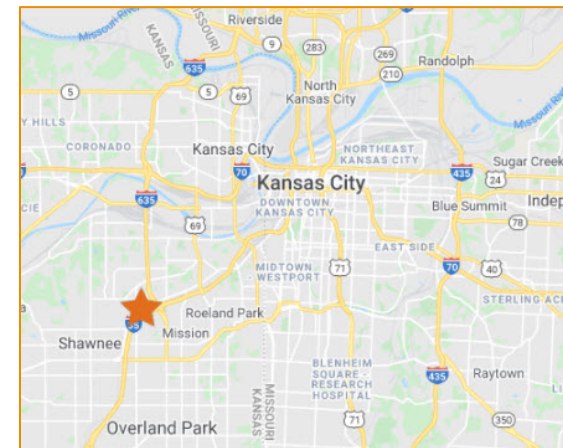
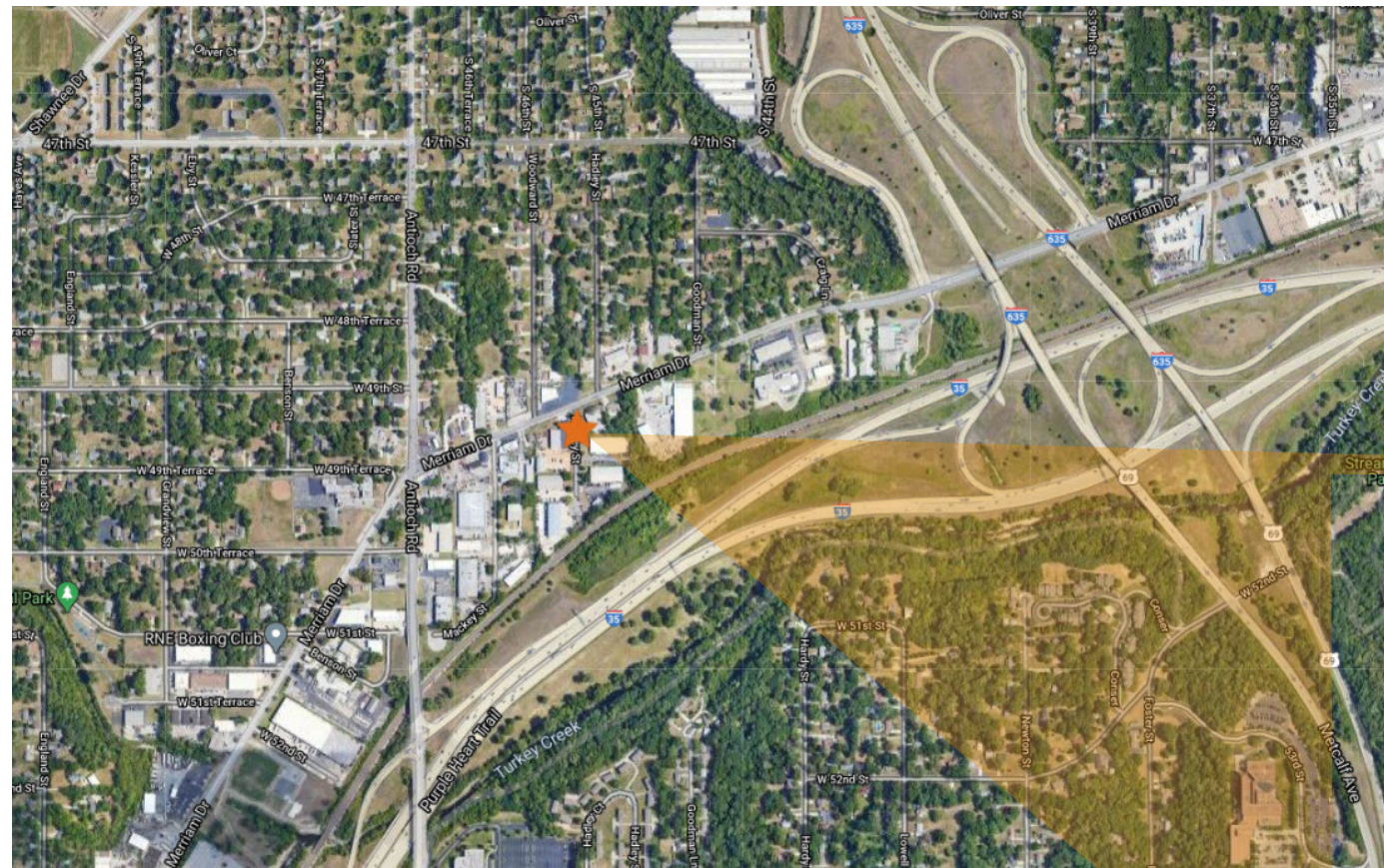
For more information, please contact:

MATTHEW SEVERNS, SIOR, CCIM
Industrial Brokerage
816.936.8543 direct
mseverns@kessingerhunter.com

KESSINGER HUNTER & COMPANY, LC
2600 Grand Boulevard, Suite 700
Kansas City, MO 64108
816.842.2690
www.kessingerhunter.com

5004-5022 HADLEY STREET, OVERLAND PARK, KANSAS 66203

For Lease



For more information, please contact:

MATTHEW SEVERNS, SIOR, CCIM
Industrial Brokerage
816.936.8543 direct
mseverns@kessingerhunter.com

KESSINGER HUNTER & COMPANY, LC
2600 Grand Boulevard, Suite 700
Kansas City, MO 64108
816.842.2690
www.kessingerhunter.com