

ROSANA SQUARE OFFICE

7700-7800 W. 119th Street
(119th & Metcalf)

OVERLAND PARK, KANSAS 66213

est. 1879

KH

KESSINGER HUNTER
commercial real estate

OFFICE FOR LEASE

Office SF Available: Approximately 6,050-42,050



FEATURES

- High-profile, mixed-use location in South Johnson County with excellent access and visibility at the northwest corner of 119th and Metcalf in Overland Park, Kansas
- Multiple space options available ranging in size from 6,050 SF up to approximately 14,000 SF.
- Rental Rate - \$17.50-\$21.25/SF Full Service
- First floor, park-at-your-door access
- Very flexible space configurations
- Exterior facade signage opportunities
- Ideal opportunity for tech companies, flex users, call centers, sales operations and service-oriented companies who need/want quick access from car to space
- Abundant surface parking directly adjacent to the office space
- Dock-high loading capability
- Rosana Square's office space offers an amenity-rich environment with access to all types of services including restaurants, hotels, banking, grocery, fast food, and much more!

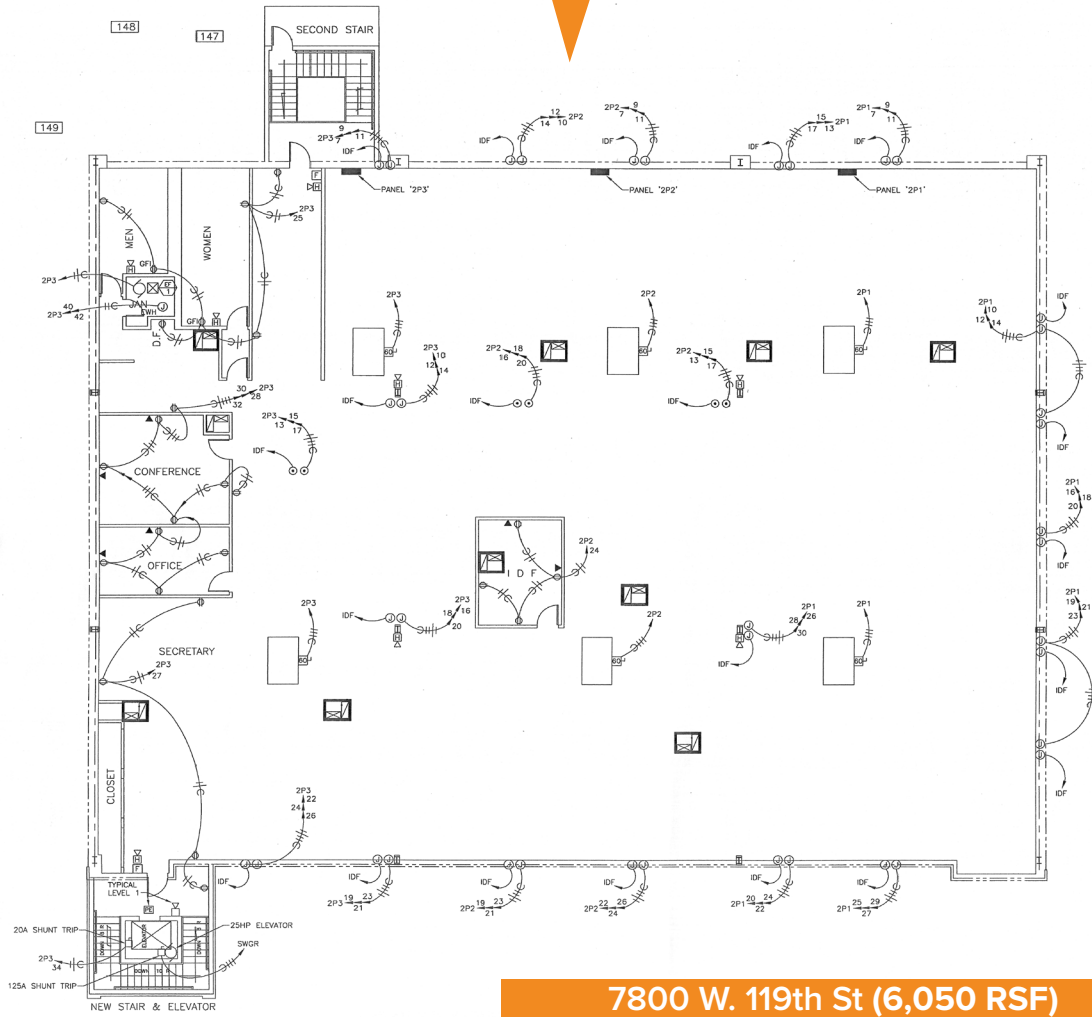
FOR MORE INFORMATION, PLEASE CONTACT:

Tom Ward
Office Brokerage
816.936.8527
tward@kessingerhunter.com

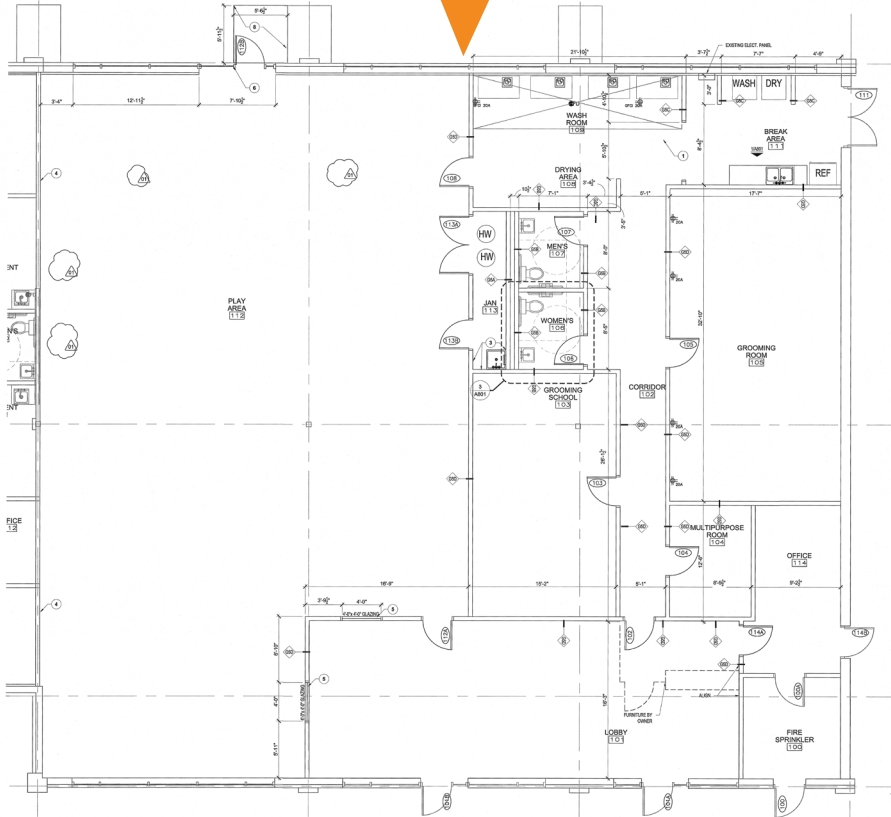
Greg Swetnam
Principal, Director of Office Brokerage
816.936.8510
gswetnam@kessingerhunter.com

KESSINGER HUNTER & COMPANY, LC
2600 Grand Boulevard, Suite 700
Kansas City, MO 64108
(816) 842-2690
kessingerhunter.com

7720 W. 119th St (14,000 RSF)



7800 W. 119th St (6,050 RSF)



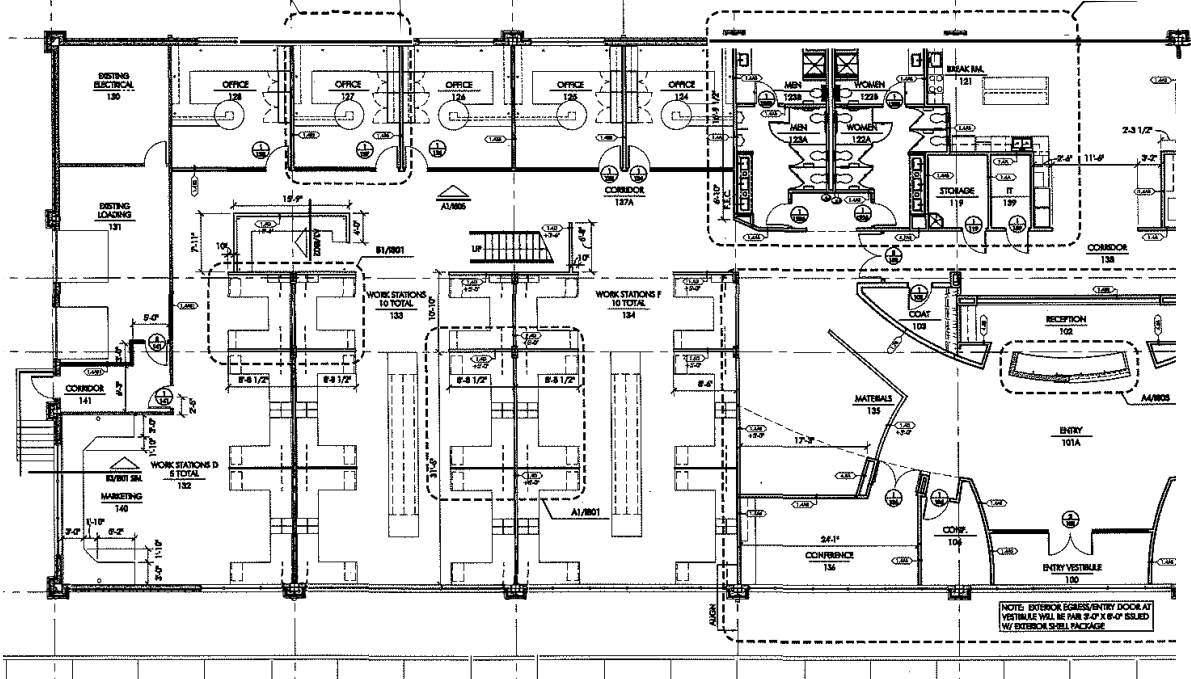
Rosana Square

OFFICE

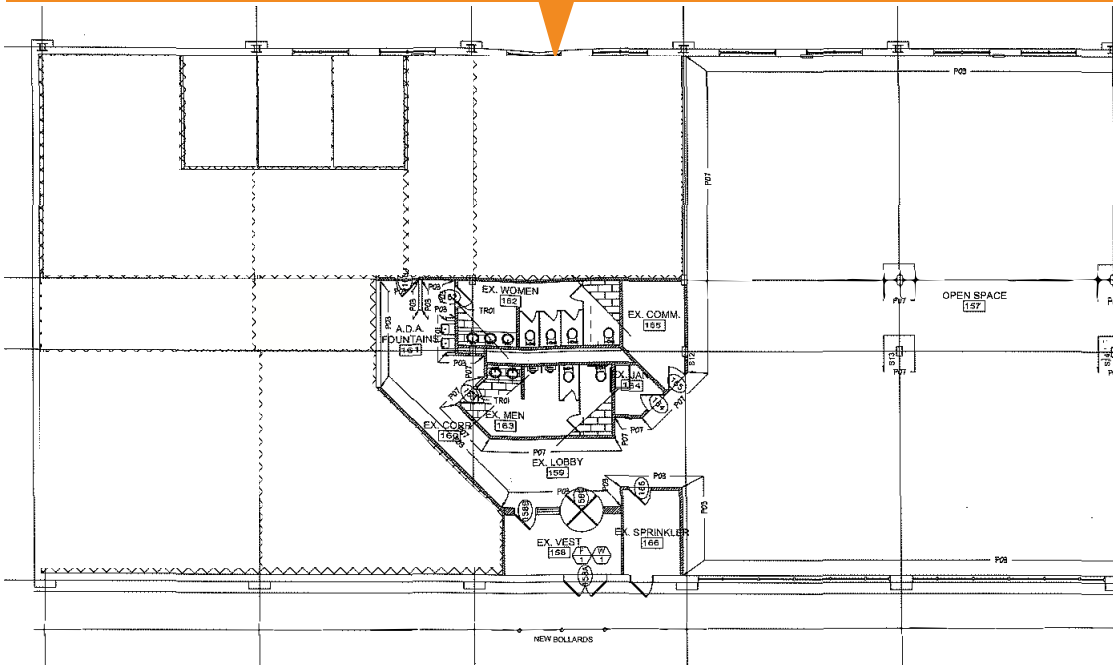
119th & Metcalf

NOT TO SCALE

7780 W. 119th St (10,000 RSF)



7772 W. 119th St (12,000 SF)





Total Office SF Available: Approximately 42,050

FOR MORE INFORMATION, PLEASE CONTACT:

Tom Ward
Office Brokerage
816.936.8527
tward@kessingerhunter.com

Greg Swetnam
Principal, Director of Office Brokerage
816.936.8510
gswetnam@kessingerhunter.com

KESSINGER HUNTER & COMPANY, LC
2600 Grand Boulevard, Suite 700
Kansas City, MO 64108
(816) 842-2690
kessingerhunter.com