

# 7616-7618 WEDD STREET

## OVERLAND PARK, KANSAS 66204

INDUSTRIAL SPACE WITH OUTSIDE STORAGE FOR LEASE | 17,710± SF



**KESSINGER HUNTER**  
commercial real estate

### PROPERTY FEATURES

- Excellent access to I-35
- 14'-18' clear height
- 3 overhead drive-in doors (1 oversized 13'6" x 15'6")
- **Heavy power – 480V | 3-Phase**
- Ideal central location
- Rare infill location with fenced/paved outside storage
- New office finish
- **3.41± acre site**

#### ADDITIONAL INFO

TOTAL SIZE AVAILABLE	17,710± SF
OFFICE SPACE	2,800± SF
LEASE RATE	\$8.25 PSF Net
TAXES	\$1.11 PSF (2020)
INSURANCE	\$0.39 PSF
ZONING	M-1 Industrial Park District



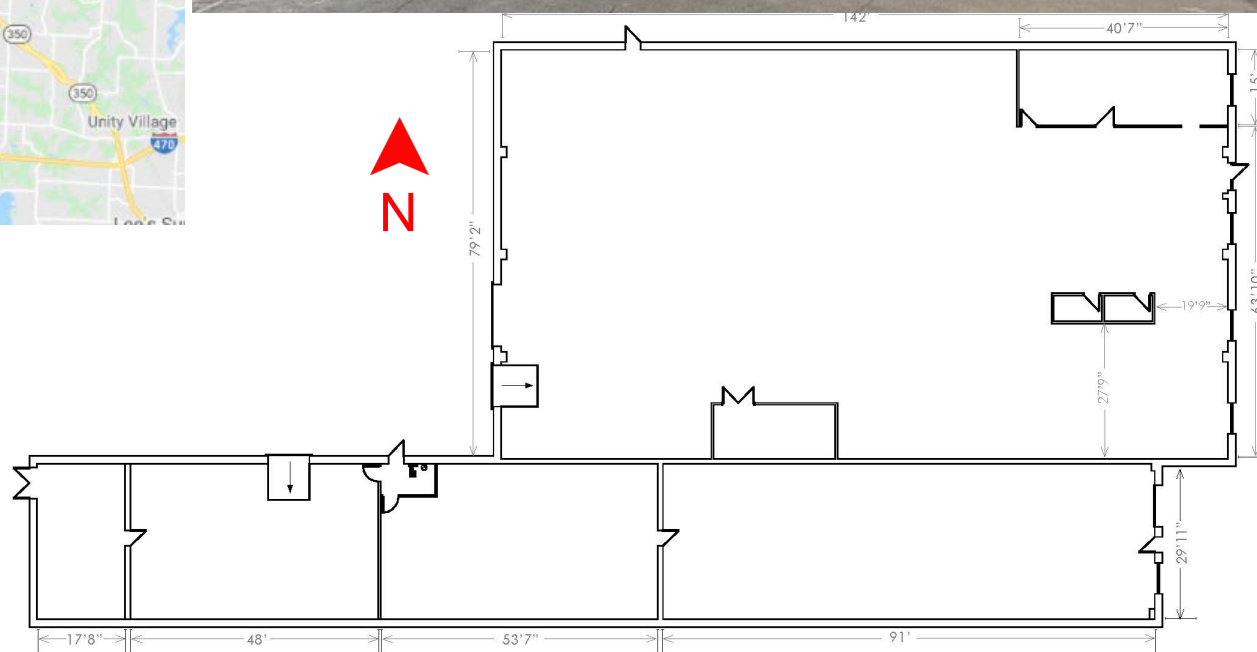
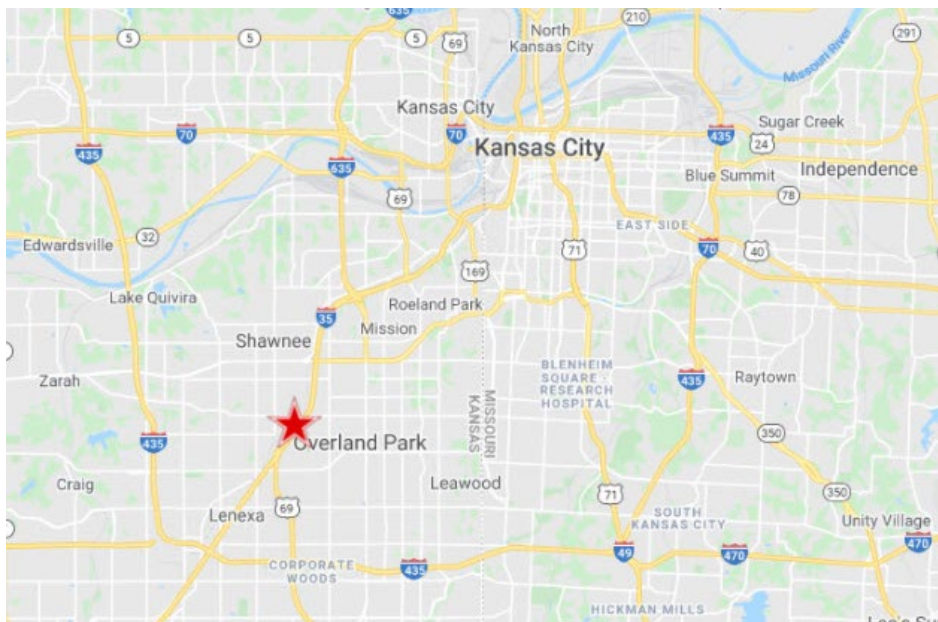
For more information, please contact:

**MATTHEW SEVERNS, SIOR, CCIM**  
Industrial Brokerage  
816.936.8543 direct  
[mseverns@kessingerhunter.com](mailto:mseverns@kessingerhunter.com)

**KESSINGER HUNTER & COMPANY, LC**  
2600 Grand Boulevard, Suite 700  
Kansas City, MO 64108  
816.842.2690  
[www.kessingerhunter.com](http://www.kessingerhunter.com)

# 7616-7618 WEDD STREET, OVERLAND PARK, KANSAS 66204

## Industrial Space for Lease



For more information, please contact:

**MATTHEW SEVERNS, SIOR, CCIM**  
 Industrial Brokerage  
 816.936.8543 direct  
[mseverns@kessingerhunter.com](mailto:mseverns@kessingerhunter.com)

**KESSINGER HUNTER & COMPANY, LC**  
 2600 Grand Boulevard, Suite 700  
 Kansas City, MO 64108  
 816.842.2690  
[www.kessingerhunter.com](http://www.kessingerhunter.com)