

# 9261 CODY

## OVERLAND PARK, KANSAS 66214

INDUSTRIAL SPACE FOR LEASE | 12,000± SF



**KESSINGER HUNTER**  
commercial real estate

## CONGLETON INDUSTRIAL PARK

### PROPERTY FEATURES

- Dock-high loading
- Excellent access to I-35
- 16' clear height
- Ample parking
- Great showroom/warehouse space
- Built in 1981
- Flexible open office layout
- Available immediately

#### ADDITIONAL INFO

TOTAL SIZE AVAILABLE	12,000± SF
OFFICE SPACE	3,000± SF
LEASE RATE	\$5.95 PSF NNN
CAM	\$1.32 PSF
TAXES	\$1.42 PSF
INSURANCE	\$0.10 PSF
ZONING	Light Industrial



For more information, please contact:

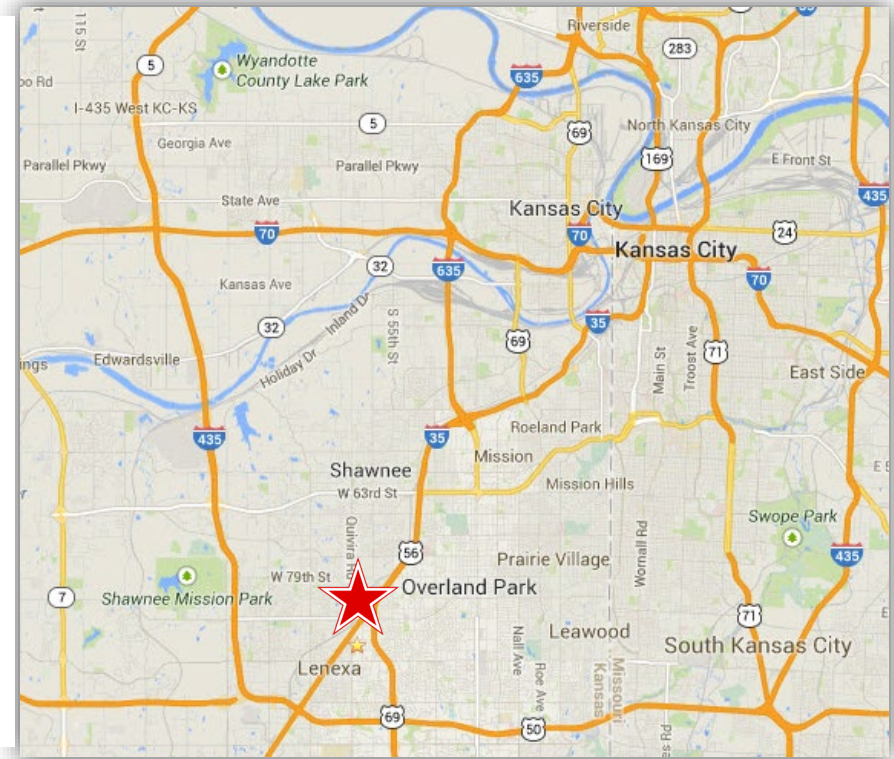
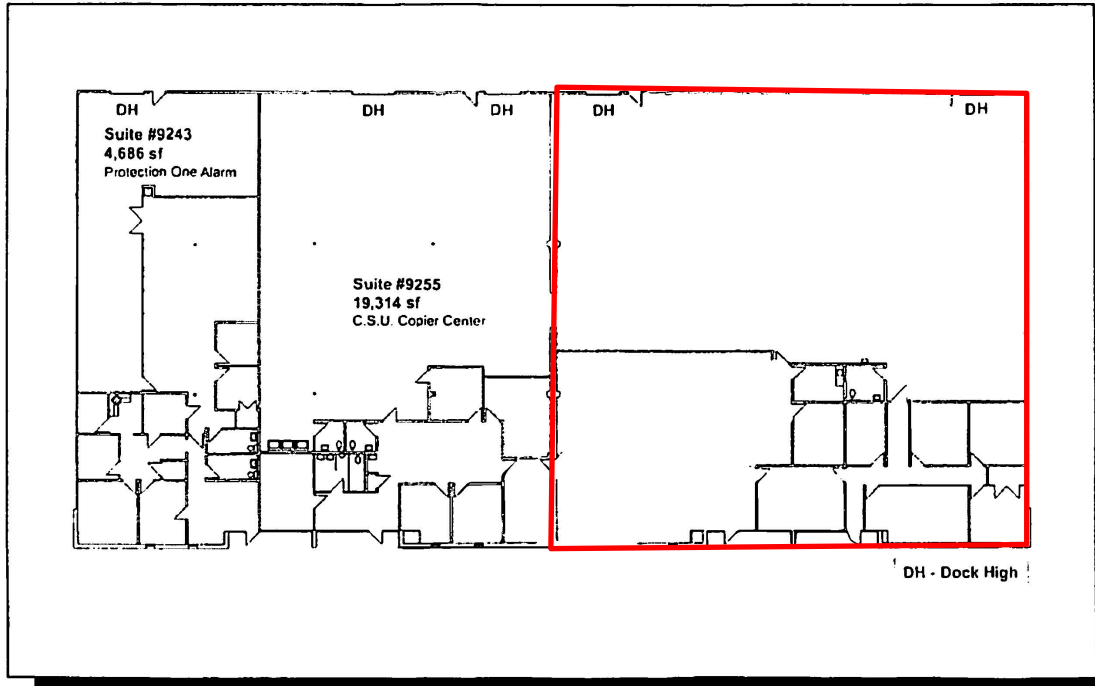
**MATTHEW SEVERNS, SIOR, CCIM**  
Industrial Brokerage  
816.936.8543 direct  
[mseverns@kessingerhunter.com](mailto:mseverns@kessingerhunter.com)

**PATRICK J. MCGANNON, SIOR**  
Director of Industrial Brokerage  
816.936.8514 direct  
[pmcgannon@kessingerhunter.com](mailto:pmcgannon@kessingerhunter.com)

**KESSINGER HUNTER & COMPANY, LC**  
2600 Grand Boulevard, Suite 700  
Kansas City, MO 64108  
816.842.2690  
[www.kessingerhunter.com](http://www.kessingerhunter.com)

# 9261 CODY, OVERLAND PARK, KANSAS 66214

## Industrial Space for Lease



For more information, please contact:

**MATTHEW SEVERNS, SIOR, CCIM**  
 Industrial Brokerage  
 816.936.8543 direct  
[mseverns@kessingerhunter.com](mailto:mseverns@kessingerhunter.com)

**PATRICK J. MCGANNON, SIOR**  
 Director of Industrial Brokerage  
 816.936.8514 direct  
[pmcgannon@kessingerhunter.com](mailto:pmcgannon@kessingerhunter.com)

**KESSINGER HUNTER & COMPANY, LC**  
 2600 Grand Boulevard, Suite 700  
 Kansas City, MO 64108  
 816.842.2690  
[www.kessingerhunter.com](http://www.kessingerhunter.com)