

5185 MERRIAM DRIVE

MERRIAM, KANSAS 66203

INDUSTRIAL SPACE FOR LEASE | 14,700± SF



KESSINGER HUNTER
commercial real estate

METROPOLITAN DISTRIBUTION CENTER

PROPERTY FEATURES

- Great central KC metro location
- 2 dock-high doors
- 18' clear height
- Heavy power
 - 1,000 Amp | 480 Volt | 3 Phase Electrical Service
- Zoned I-1 (Light Industrial)
- Wet fire sprinkler system

ADDITIONAL INFO

TOTAL SIZE	14,700± SF with 2,000± SF of office space
LEASE RATE	\$5.25 PSF NNN
TAXES	\$1.11 PSF
INSURANCE	\$0.14 PSF
CAM	\$0.55 PSF
AVAILABLE	Immediately



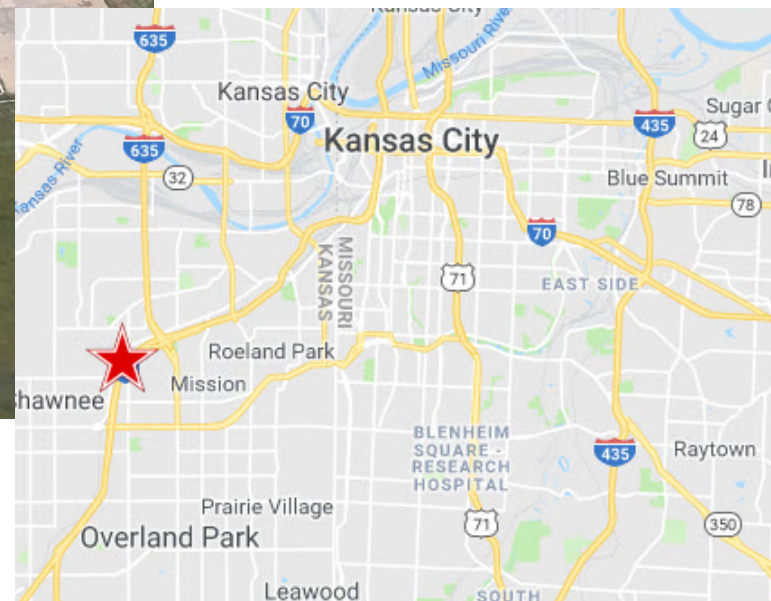
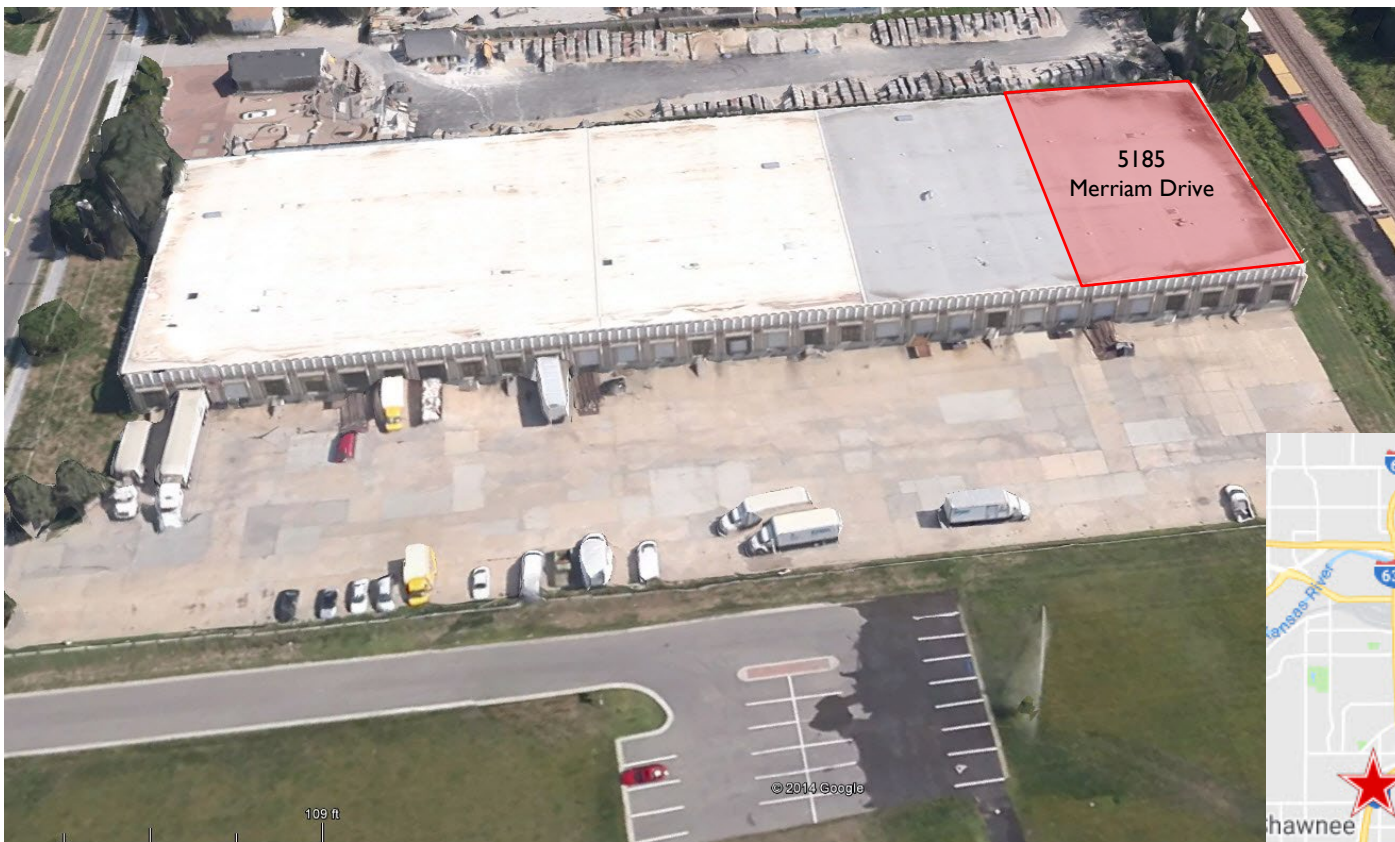
For more information, please contact:

MATTHEW SEVERNS, SIOR, CCIM
Industrial Brokerage
816.936.8543 direct
mseverns@kessingerhunter.com

KESSINGER HUNTER & COMPANY, LC
2600 Grand Boulevard, Suite 700
Kansas City, MO 64108
816.842.2690
www.kessingerhunter.com

5185 MERRIAM DRIVE, MERRIAM, KANSAS 66203

Industrial Space for Lease



For more information, please contact:

MATTHEW SEVERNS, SIOR, CCIM
Industrial Brokerage
816.936.8543 direct
mseverns@kessingerhunter.com

KESSINGER HUNTER & COMPANY, LC
2600 Grand Boulevard, Suite 700
Kansas City, MO 64108
816.842.2690
www.kessingerhunter.com