

4500-4700 NW 108TH STREET

KANSAS CITY, MISSOURI 64154

LAND FOR SALE | 97.3± ACRES



KESSINGER HUNTER
commercial real estate

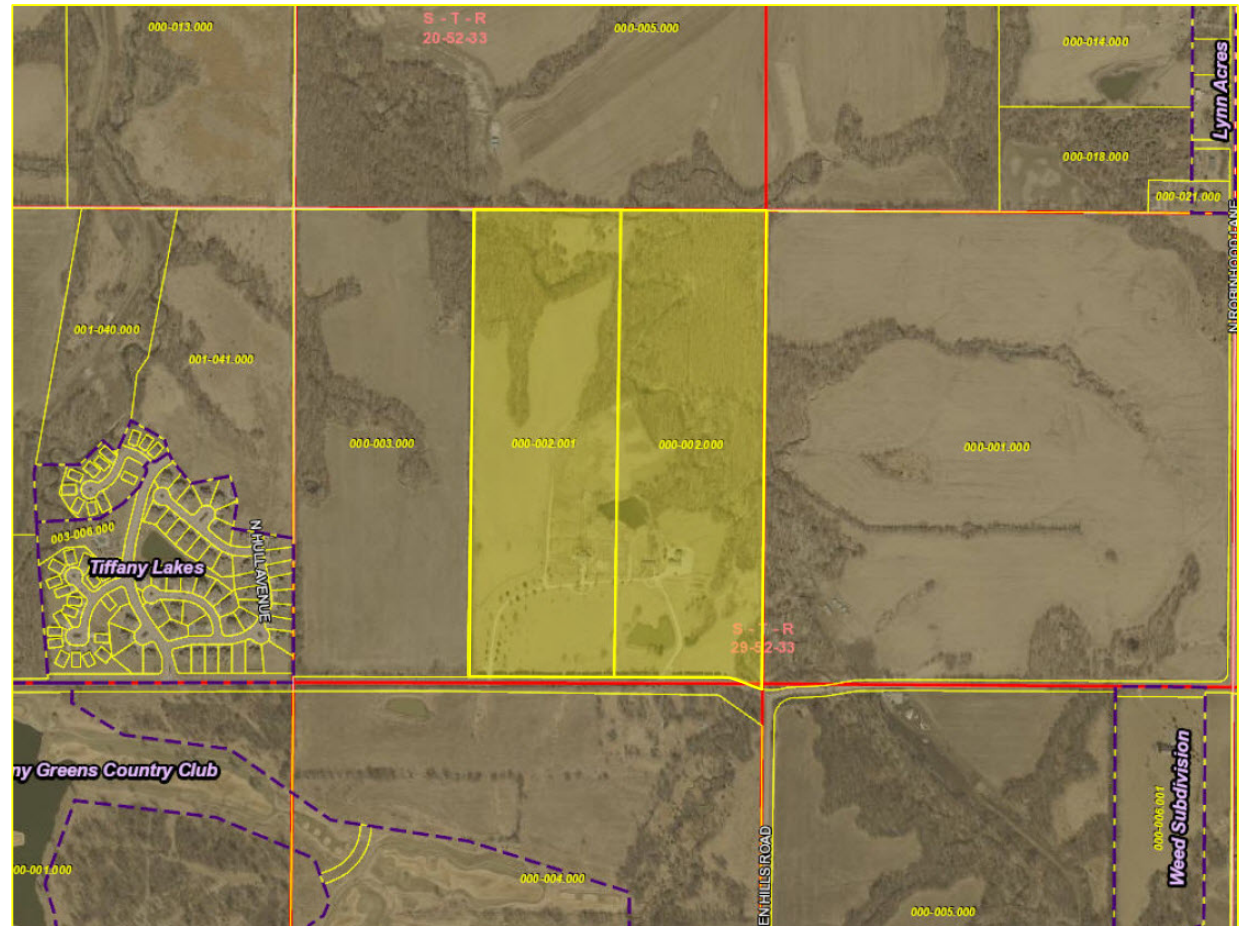
GREAT ACCESS TO 169 HWY & I-435

PROPERTY FEATURES

- Located in a Fast-Growing Area
- Great Northland site
- Potential Recreational/Equestrian Property
- Various Structures on Property
- Great Highway Access

ADDITIONAL INFO

SALES PRICE	\$3,000,000
TAXES (2019)	\$4,613.68
ZONING	AG-R



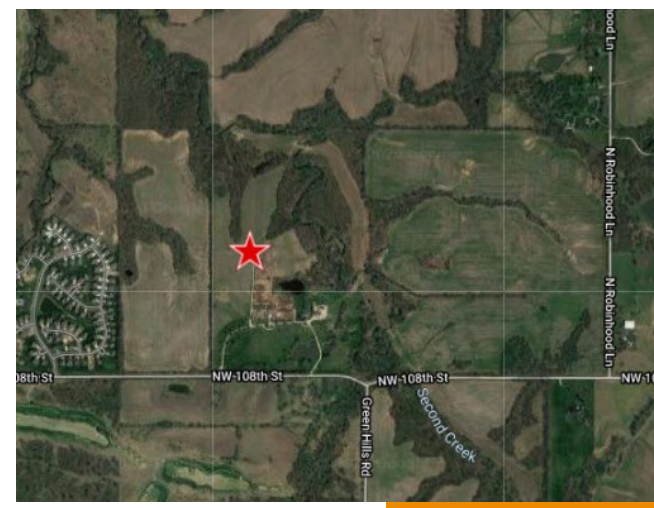
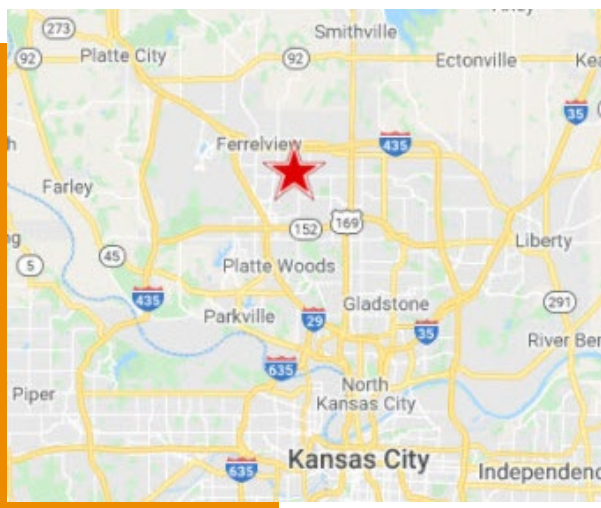
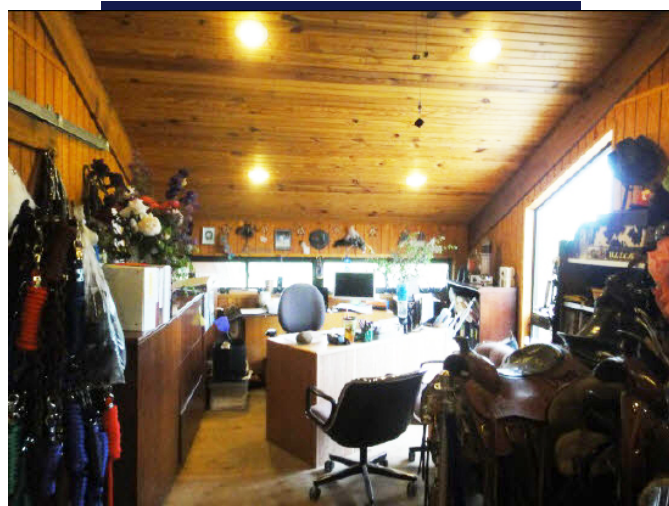
For more information, please contact:

ANDY TAYLOR
Industrial Brokerage
816.936.8503 direct
816.812.7676 mobile
ataylor@kessingerhunter.com

KESSINGER HUNTER & COMPANY, LC
2600 Grand Boulevard, Suite 700
Kansas City, MO 64108
816.842.2690
www.kessingerhunter.com

4500-4700 NW 108TH STREET, KANSAS CITY, MISSOURI 64154

Land for Sale



For more information, please contact:

ANDY TAYLOR
 Industrial Brokerage
 816.936.8503 direct
 816.812.7676 mobile
ataylor@kessingerhunter.com

KESSINGER HUNTER & COMPANY, LC
 2600 Grand Boulevard, Suite 700
 Kansas City, MO 64108
 816.842.2690
www.kessingerhunter.com