

For Sublease

# 9200 Indian Creek Parkway

6,179 SF

Class A Office

Overland Park, KS

**AVAILABLE IMMEDIATELY | SHORT-TERM & MOVE-IN READY**

All information contained herein was made based upon information furnished to us by the owner or from sources we believe are reliable. While we do not doubt its accuracy, we have not verified it and we do not make any guarantee, warranty or representation about it. The property offered is subject to prior sale, lease, change of price or withdrawal from the market without notice. License #01908328 | [avisonyoung.com](http://avisonyoung.com)

**GREG SWETNAM**

[gswetnam@kessingerhunter.com](mailto:gswetnam@kessingerhunter.com)

cell: +1.816.289.4873

main: +1.816.842.2690

**JULIE DUNLAP**

[julie.dunlap@avisonyoung.com](mailto:julie.dunlap@avisonyoung.com)

cell: +1.858.229.5597

main: +1.858.519.3247



**AVISON  
YOUNG**

# Property Highlights

- 6,179 SF Class A office space
- 4.00 free surface parking spaces available per 1,000 SF
- Office Park amenities include cafés, restaurants, bike trails and green space
- Immediate availability
- Existing furniture available
- Available through 3/31/2022
- Asking rate: \$18.00/SF, Full-Service



## GREG SWETNAM

gswetnam@kessingerhunter.com  
cell: +1.816.289.4873  
main: +1.816.842.2690

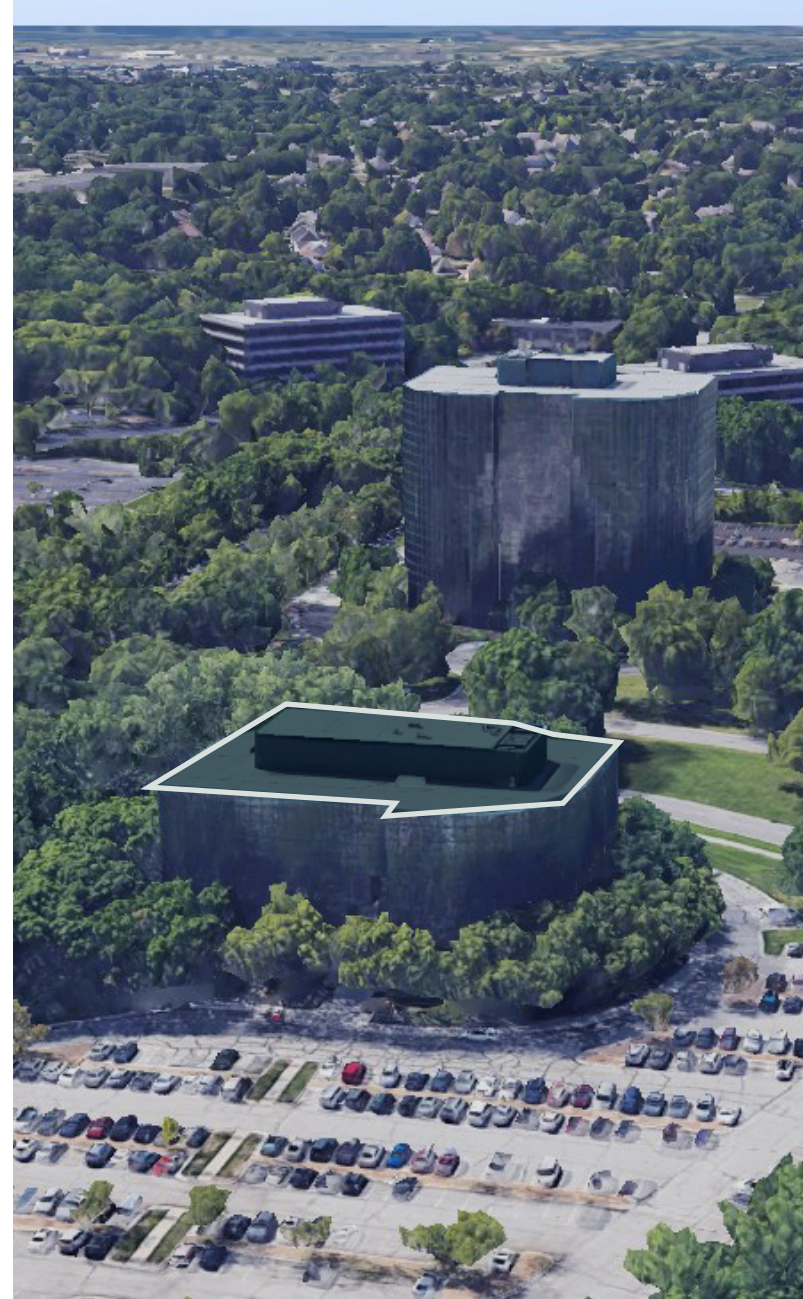
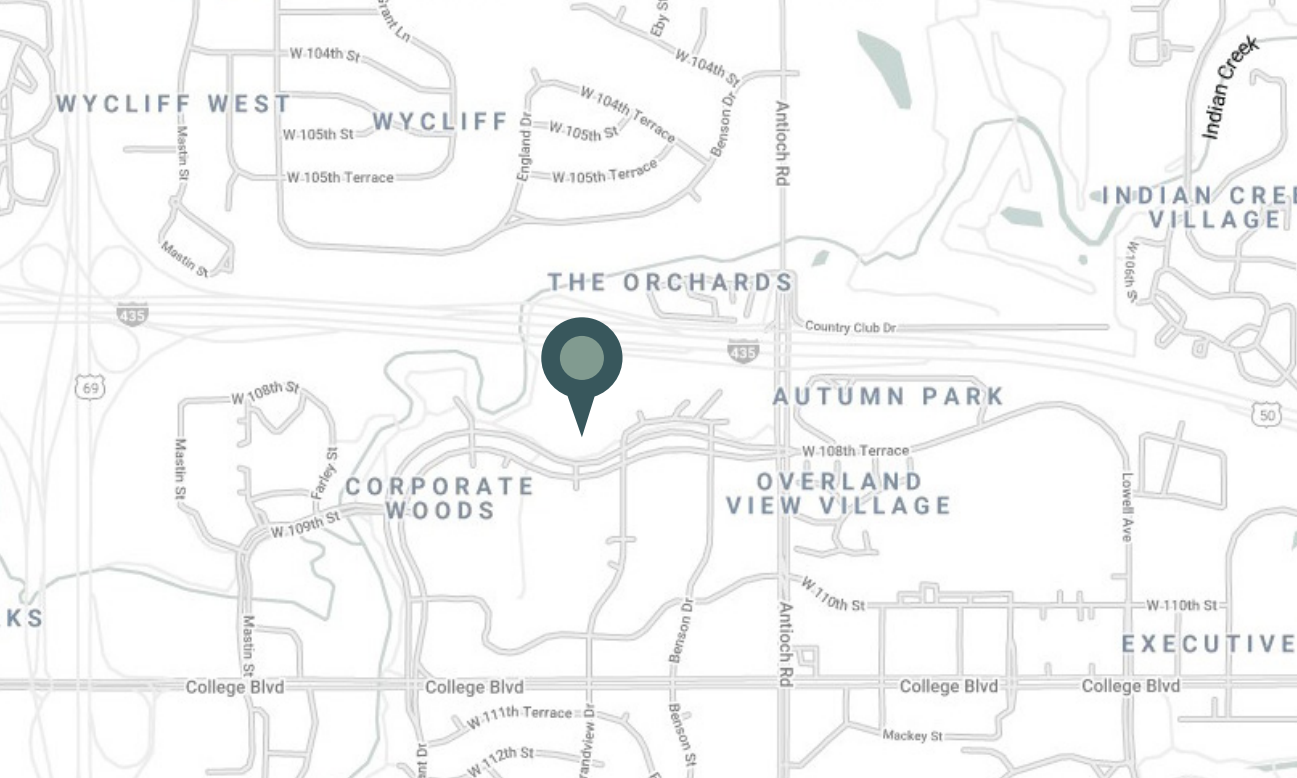
## JULIE DUNLAP

julie.dunlap@avisonyoung.com  
cell: +1.858.229.5597  
main: +1.858.519.3247



**KESSINGER HUNTER**  
commercial real estate

**AVISON  
YOUNG**



## Location Highlights

- Located within Corporate Woods Office Park
- Bike trails, cafés, restaurants, and retail services nearby
- Easy interstate access - I-435 & Antioch Road

**GREG SWETNAM**

gswetnam@kessingerhunter.com  
cell: +1.816.289.4873  
main: +1.816.842.2690

**JULIE DUNLAP**

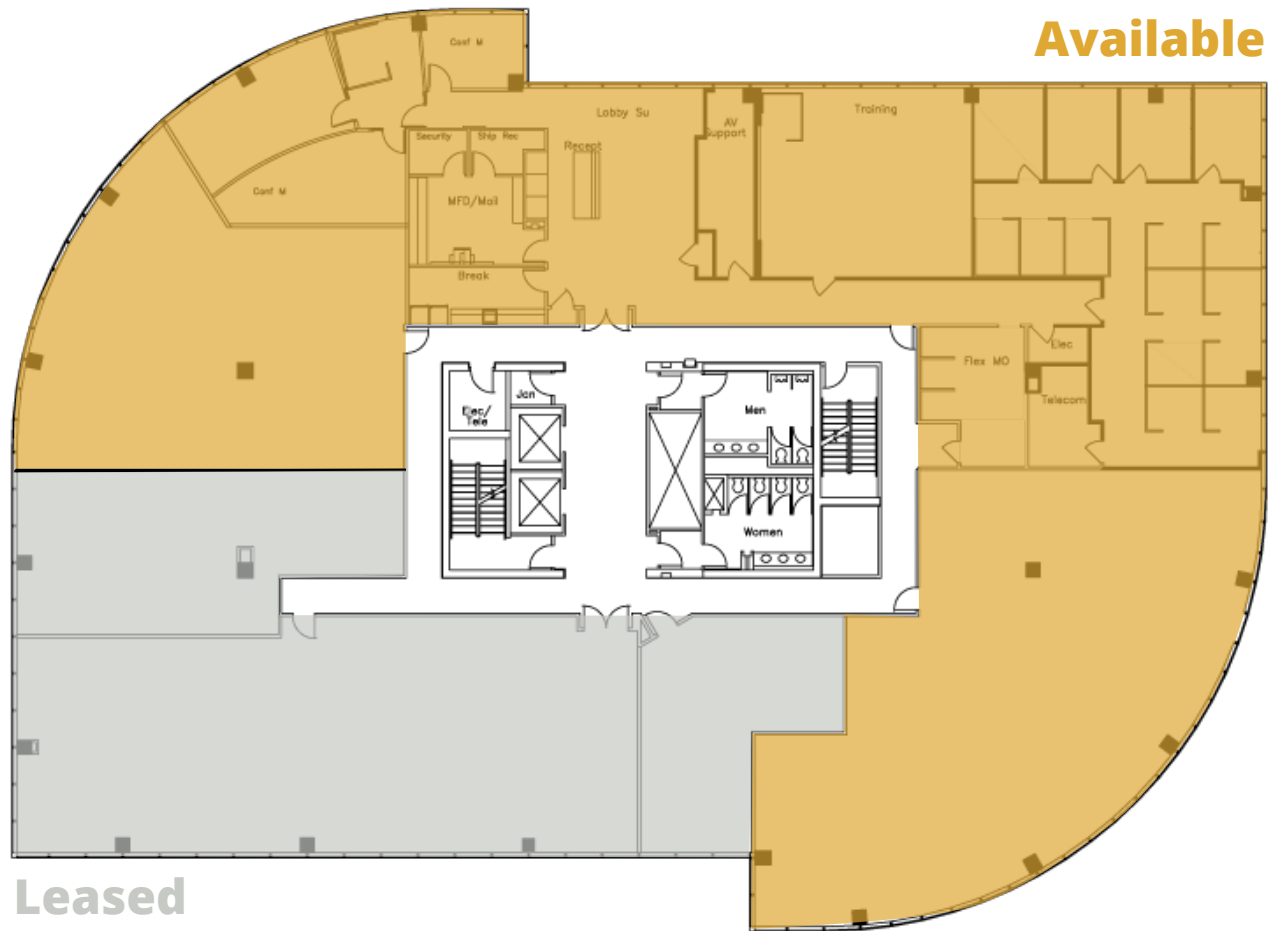
julie.dunlap@avisonyoung.com  
cell: +1.858.229.5597  
main: +1.858.519.3247



**KESSINGER HUNTER**  
commercial real estate

**AVISON  
YOUNG**

# 5th Floor | 6,179 SF



## GREG SWETNAM

gswetnam@kessingerhunter.com  
cell: +1.816.289.4873  
main: +1.816.842.2690

## JULIE DUNLAP

julie.dunlap@avisonyoung.com  
cell: +1.858.229.5597  
main: +1.858.519.3247



# Gallery



**GREG SWETNAM**  
gswetnam@kessingerhunter.com  
cell: +1.816.289.4873  
main: +1.816.842.2690

**JULIE DUNLAP**  
julie.dunlap@avisonyoung.com  
cell: +1.858.229.5597  
main: +1.858.519.3247



**KESSINGER HUNTER**  
commercial real estate

**AVISON  
YOUNG**