

9128 CODY

OVERLAND PARK, KANSAS 66214

FLEX SPACE FOR LEASE | 2,550± SF



KESSINGER HUNTER
commercial real estate

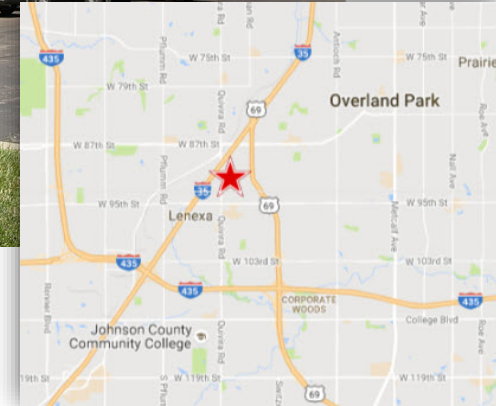
CONGLETON BUSINESS PARK

PROPERTY FEATURES

- 1,000± SF Office Area
- 1 Dock-High Door
- 3-Phase Power
- 15' Clear Height
- Wet Sprinklered
- Fully Air-Conditioned Space

ADDITIONAL INFO

TOTAL SIZE	2,550± SF
OFFICE SPACE	1,000± SF
LEASE RATE	\$6.95 PSF NNN
AVAILABLE	June 1, 2020
CAM	\$1.44 PSF
TAXES	\$1.30 PSF
INSURANCE	\$0.10 PSF



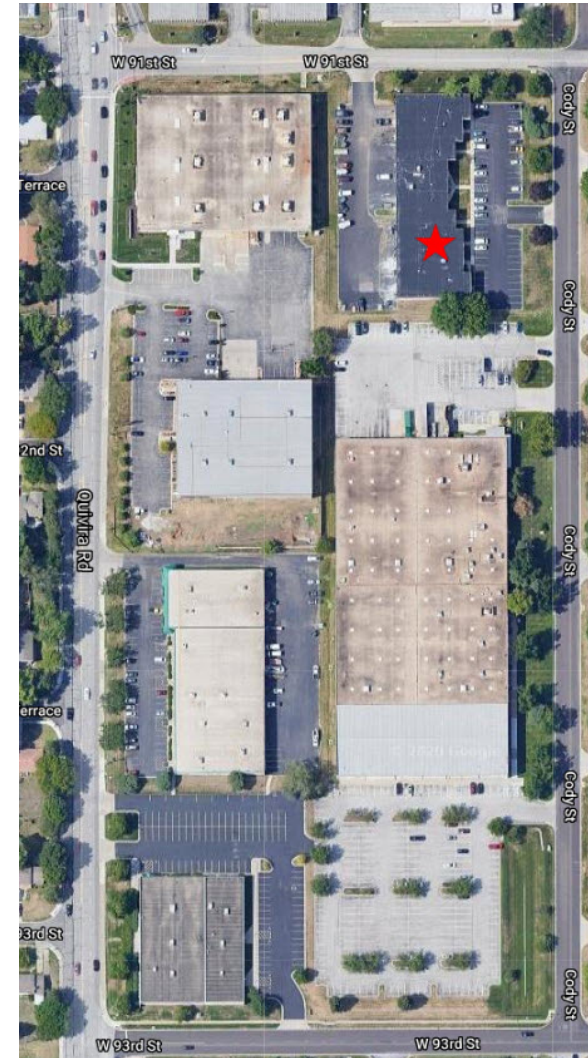
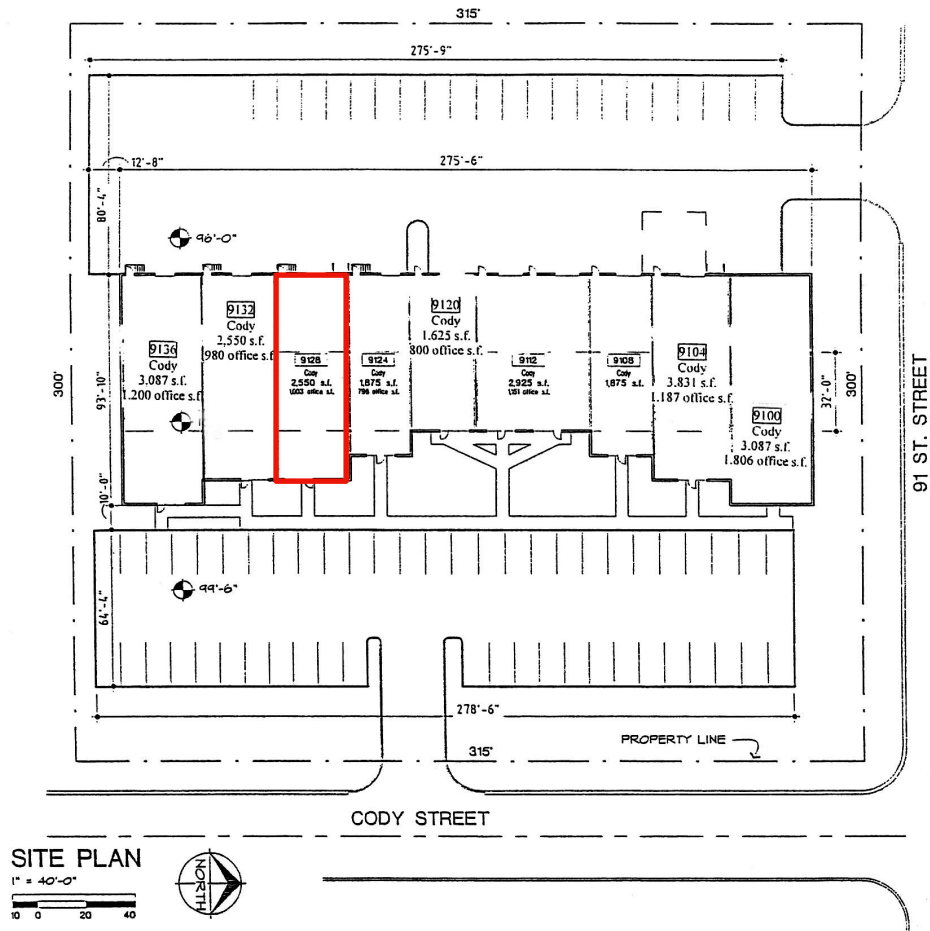
For more information, please contact:

MATTHEW SEVERNS, SIOR, CCIM
Industrial Brokerage
816.936.8543
mseverns@kessingerhunter.com

KESSINGER/HUNTER & COMPANY, LC
2600 Grand Boulevard, Suite 700
Kansas City, MO 64108
816.842.2690
www.kessingerhunter.com

9128 CODY, OVERLAND PARK, KANSAS 66214

Flex Space for Lease



For more information, please contact:

MATTHEW SEVERNS, SIOR, CCIM
Industrial Brokerage
816.936.8543
mseverns@kessingerhunter.com

KESSINGER/HUNTER & COMPANY, LC
2600 Grand Boulevard, Suite 700
Kansas City, MO 64108
816.842.2690
www.kessingerhunter.com