

401 NW MURRAY ROAD

LEE'S SUMMIT, MISSOURI 64063



KESSINGER HUNTER
commercial real estate

OFFICE OR RETAIL FOR LEASE | 7,235± SF AVAILABLE

Former National American University Space

PROPERTY FEATURES

- Excellent US 50 Highway signage and visibility
- Traffic count of 67,707 CPD along US 50 Highway
- Strong demographics and population
- Monument signage available
- ½ mile south of prominent shopping and restaurant destinations at Chipman Road and US 50 Highway, Summit Woods Crossing and Summit Fair, with two new mixed-use developments under construction



DEMOGRAPHICS	2 MILES	3 MILES	5 MILES
ESTIMATED POPULATION	25,478	45,926	94,349
EST. HOUSEHOLDS	11,650	19,443	37,828
EST. HOUSEHOLD INCOME	\$78,902	\$89,359	\$91,513

For more information, please contact:

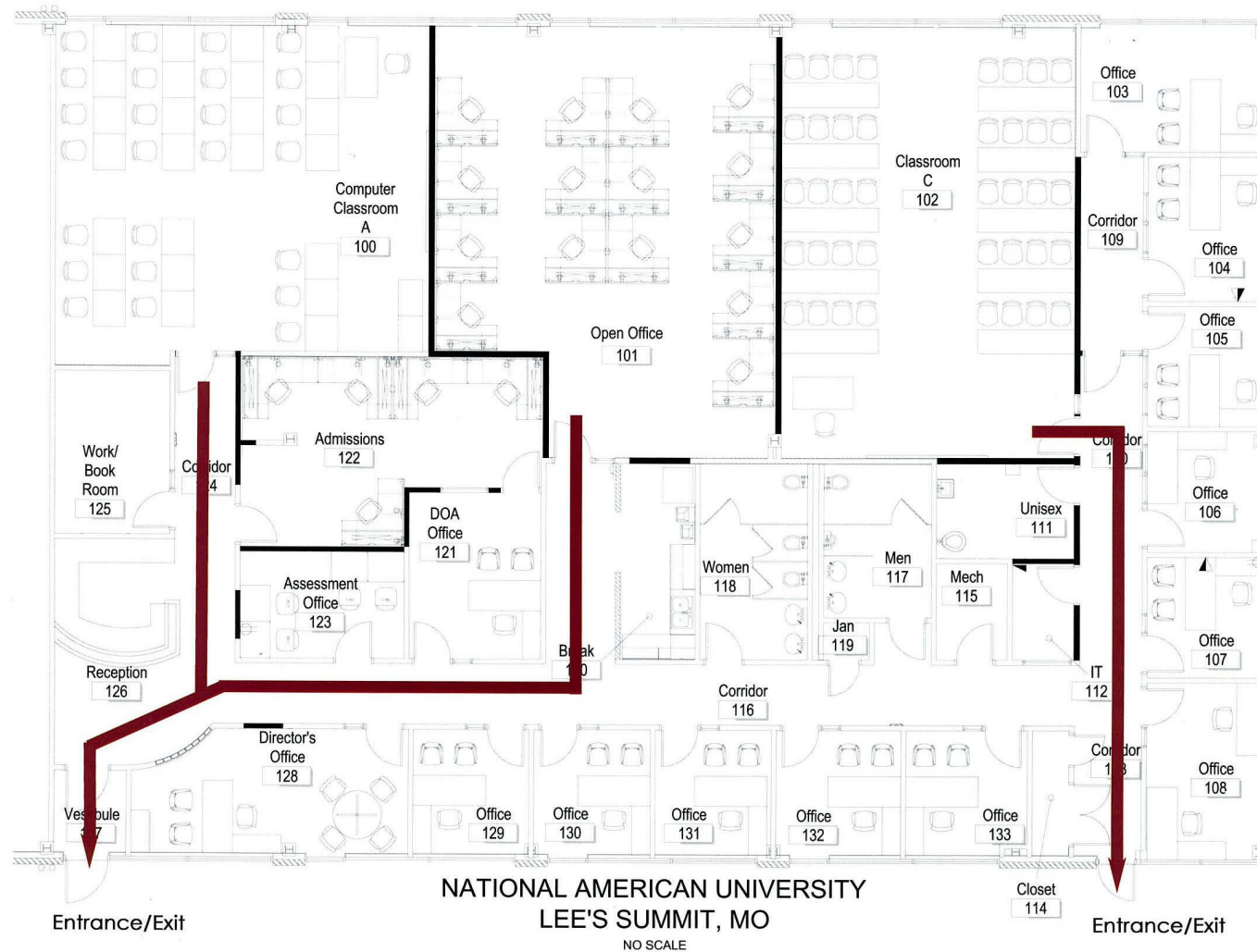
SHER BLANDFORD
Retail Brokerage
816.936.8525 direct
sblandford@kessingerhunter.com

JOE HEINZLER
Office Brokerage
816.936.8584 direct
jheinzler@kessingerhunter.com

KESSINGER/HUNTER & COMPANY, LC
2600 Grand Boulevard, Suite 700
Kansas City, MO 64108
816.842.2690
www.kessingerhunter.com

401 NW MURRAY ROAD, LEE'S SUMMIT, MO 64063

For Lease



For more information, please contact:

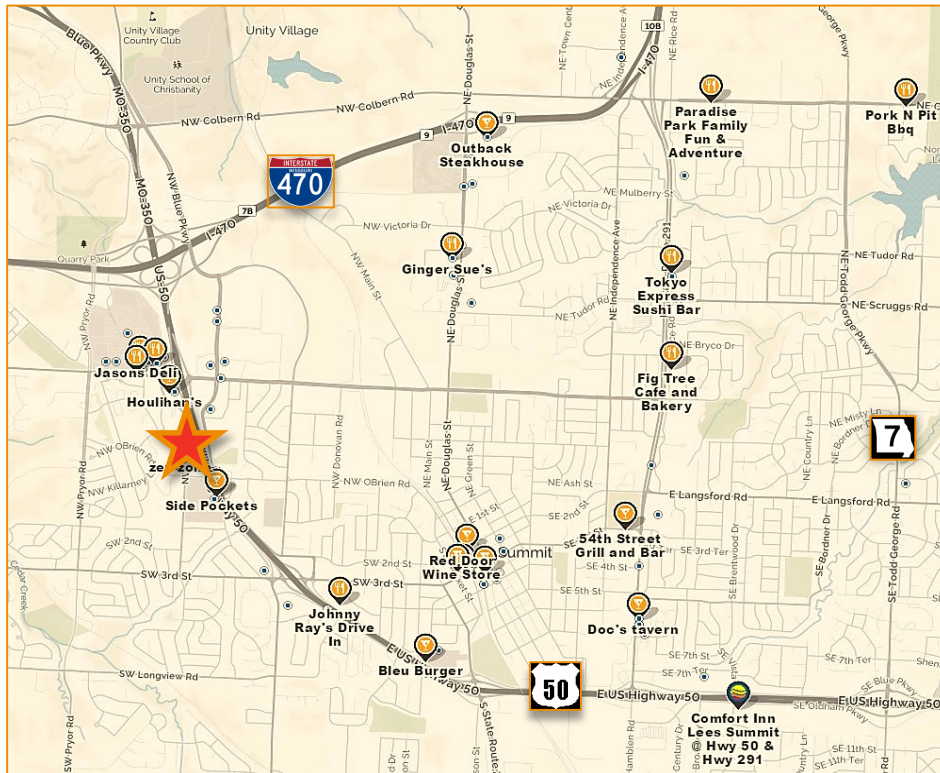
SHER BLANDFORD
Retail Brokerage
816.936.8525 direct
sblandford@kessingerhunter.com

JOE HEINZLER
Office Brokerage
816.936.8584 direct
jheinzler@kessingerhunter.com

KESSINGER/HUNTER & COMPANY, LC
2600 Grand Boulevard, Suite 700
Kansas City, MO 64108
816.842.2690
www.kessingerhunter.com

401 NW MURRAY ROAD, LEE'S SUMMIT, MO 64063

For Lease

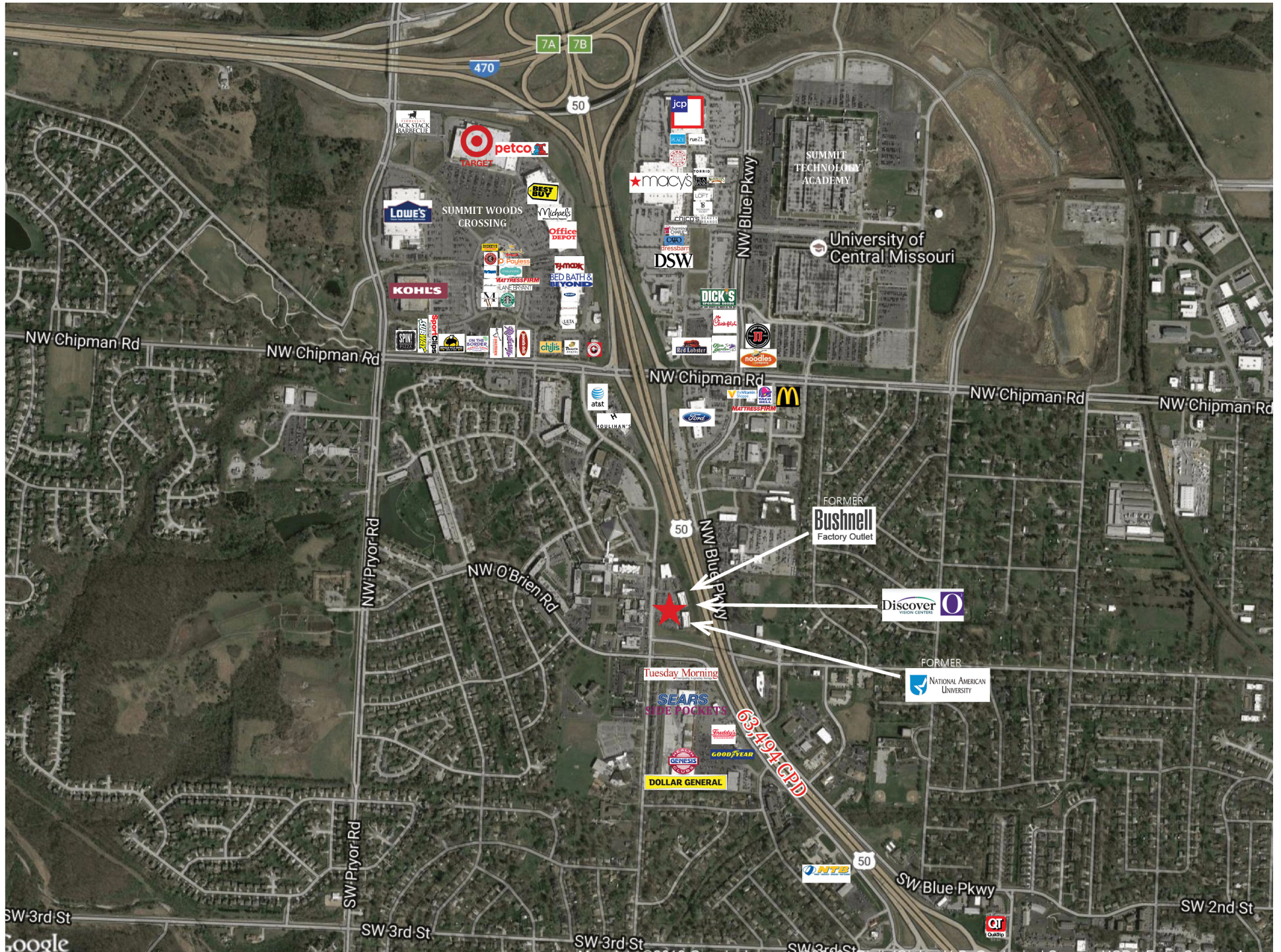


For more information, please contact:

SHER BLANDFORD
Retail Brokerage
816.936.8525 direct
sblandford@kessingerhunter.com

JOE HEINZLER
Office Brokerage
816.936.8584 direct
jheinzler@kessingerhunter.com

KESSINGER/HUNTER & COMPANY, LC
2600 Grand Boulevard, Suite 700
Kansas City, MO 64108
816.842.2690
www.kessingerhunter.com



SUMMARY PROFILE

2000-2010 Census, 2018 Estimates with 2023 Projections

Calculated using Weighted Block Centroid from Block Groups

Lat/Lon: 38.91971-94.4026

RS1

401 NW Murray Rd

Lee's Summit, MO 64081

2 mi radius 3 mi radius 5 mi radius

	2 mi radius	3 mi radius	5 mi radius
POPULATION			
2018 Estimated Population	25,478	45,926	94,349
2023 Projected Population	26,315	47,451	97,248
2010 Census Population	24,645	42,751	89,626
2000 Census Population	22,767	36,922	75,379
Projected Annual Growth 2018 to 2023	0.7%	0.7%	0.6%
Historical Annual Growth 2000 to 2018	0.7%	1.4%	1.4%
2018 Median Age	42.4	39.4	38
HOUSEHOLDS			
2018 Estimated Households	11,650	19,443	37,828
2023 Projected Households	11,853	19,803	38,504
2010 Census Households	10,607	17,192	34,162
2000 Census Households	9,782	14,868	28,504
Projected Annual Growth 2018 to 2023	0.3%	0.4%	0.4%
Historical Annual Growth 2000 to 2018	1.1%	1.7%	1.8%
RACE AND ETHNICITY			
2018 Estimated White	86.0%	84.9%	80.2%
2018 Estimated Black or African American	7.4%	8.2%	13.2%
2018 Estimated Asian or Pacific Islander	1.7%	2.0%	2.1%
2018 Estimated American Indian or Native Alaskan	0.4%	0.4%	0.3%
2018 Estimated Other Races	4.4%	4.4%	4.2%
2018 Estimated Hispanic	4.8%	4.9%	4.6%
INCOME			
2018 Estimated Average Household Income	\$78,902	\$89,359	\$91,513
2018 Estimated Median Household Income	\$68,146	\$79,120	\$81,090
2018 Estimated Per Capita Income	\$36,171	\$37,891	\$36,753
EDUCATION (AGE 25+)			
2018 Estimated Elementary (Grade Level 0 to 8)	1.5%	1.3%	1.3%
2018 Estimated Some High School (Grade Level 9 to 11)	3.7%	3.2%	3.3%
2018 Estimated High School Graduate	25.9%	23.0%	23.2%
2018 Estimated Some College	24.5%	24.4%	24.3%
2018 Estimated Associates Degree Only	8.7%	8.4%	8.7%
2018 Estimated Bachelors Degree Only	21.8%	24.3%	24.6%
2018 Estimated Graduate Degree	13.8%	15.4%	14.6%
BUSINESS			
2018 Estimated Total Businesses	1,489	2,665	3,736
2018 Estimated Total Employees	24,516	36,677	59,485
2018 Estimated Employee Population per Business	16.5	13.8	15.9
2018 Estimated Residential Population per Business	17.1	17.2	25.3

This report was produced using data from private and government sources deemed to be reliable. The information herein is provided without representation or warranty.