



PARK CENTRAL PLAZA I & II

**4717 & 4740 GRAND AVENUE
KANSAS CITY, MISSOURI 64112**



AVAILABLE SPACE

Suite 240

1,310 RSF

Suite 300

14,482 RSF (Available 9/1/19)

Suite 750

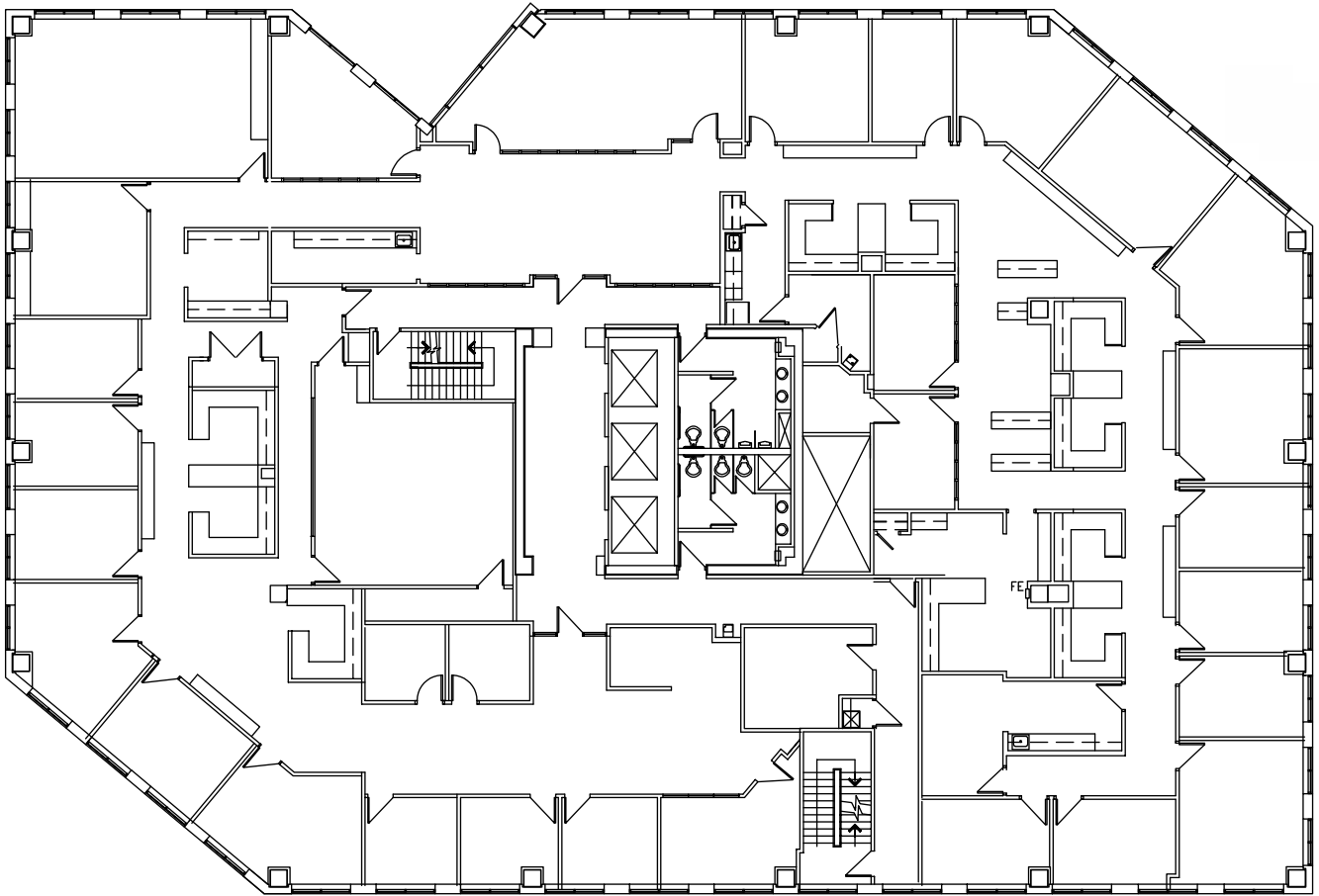
4,741 RSF

Full Service Rate of \$26.00 PSF



PARK CENTRAL PLAZA I

3rd Floor - 14,482 RSF

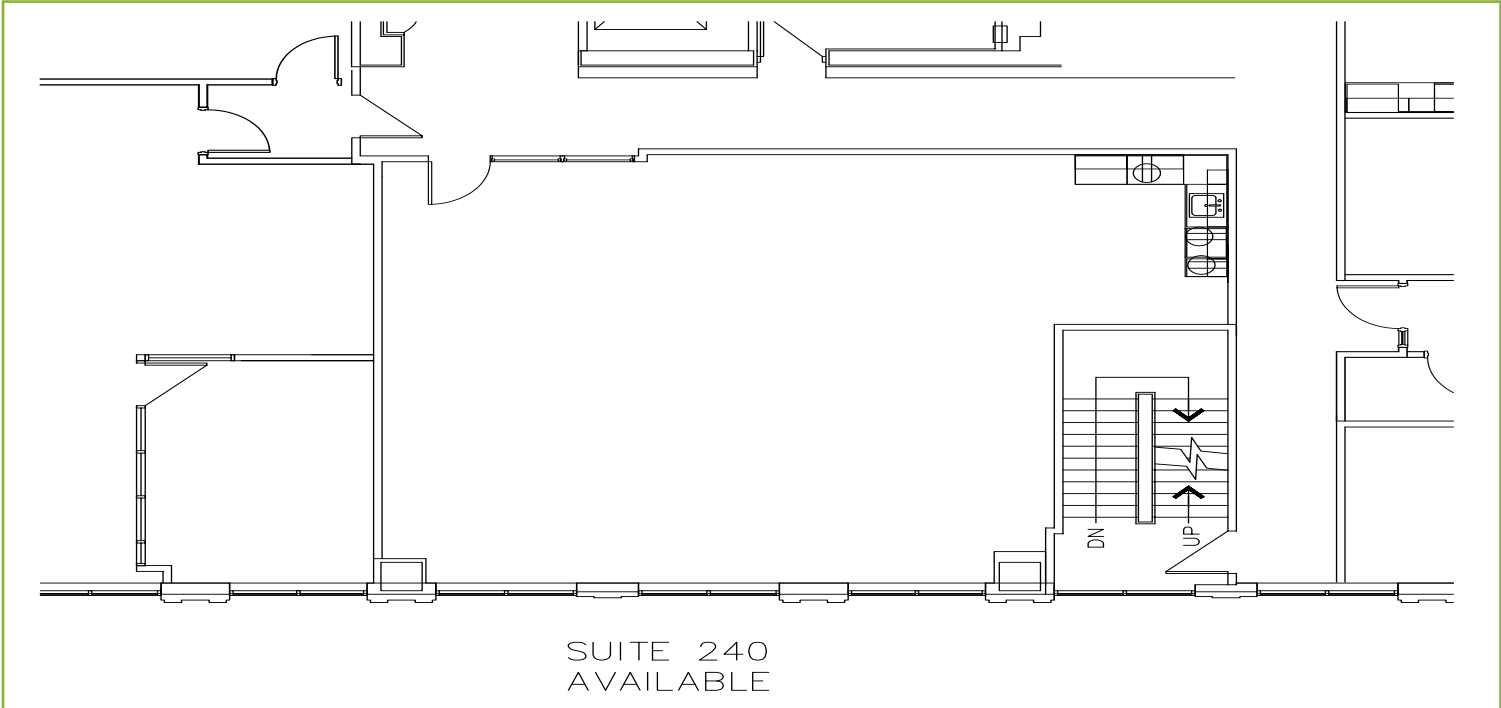


PROPERTY HIGHLIGHTS

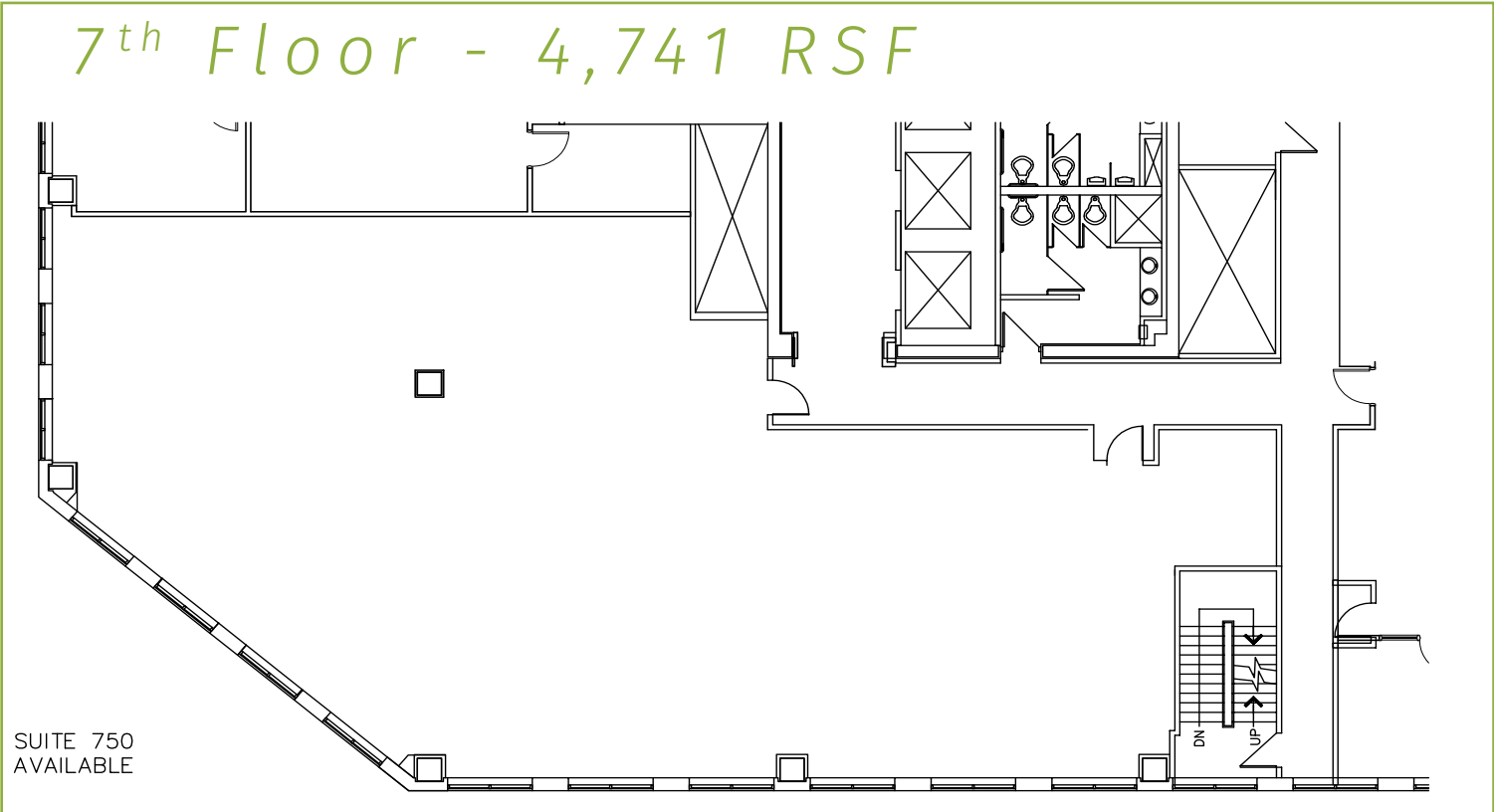
Historical Country Club Plaza
Dramatic Plaza Panoramic Views
Contemporary Finish
Fully Remodeled Common Areas
In-house Restaurant **Plus Conference Space & Catering**

PARK CENTRAL PLAZA I

2nd Floor - 1,310 RSF



7th Floor - 4,741 RSF

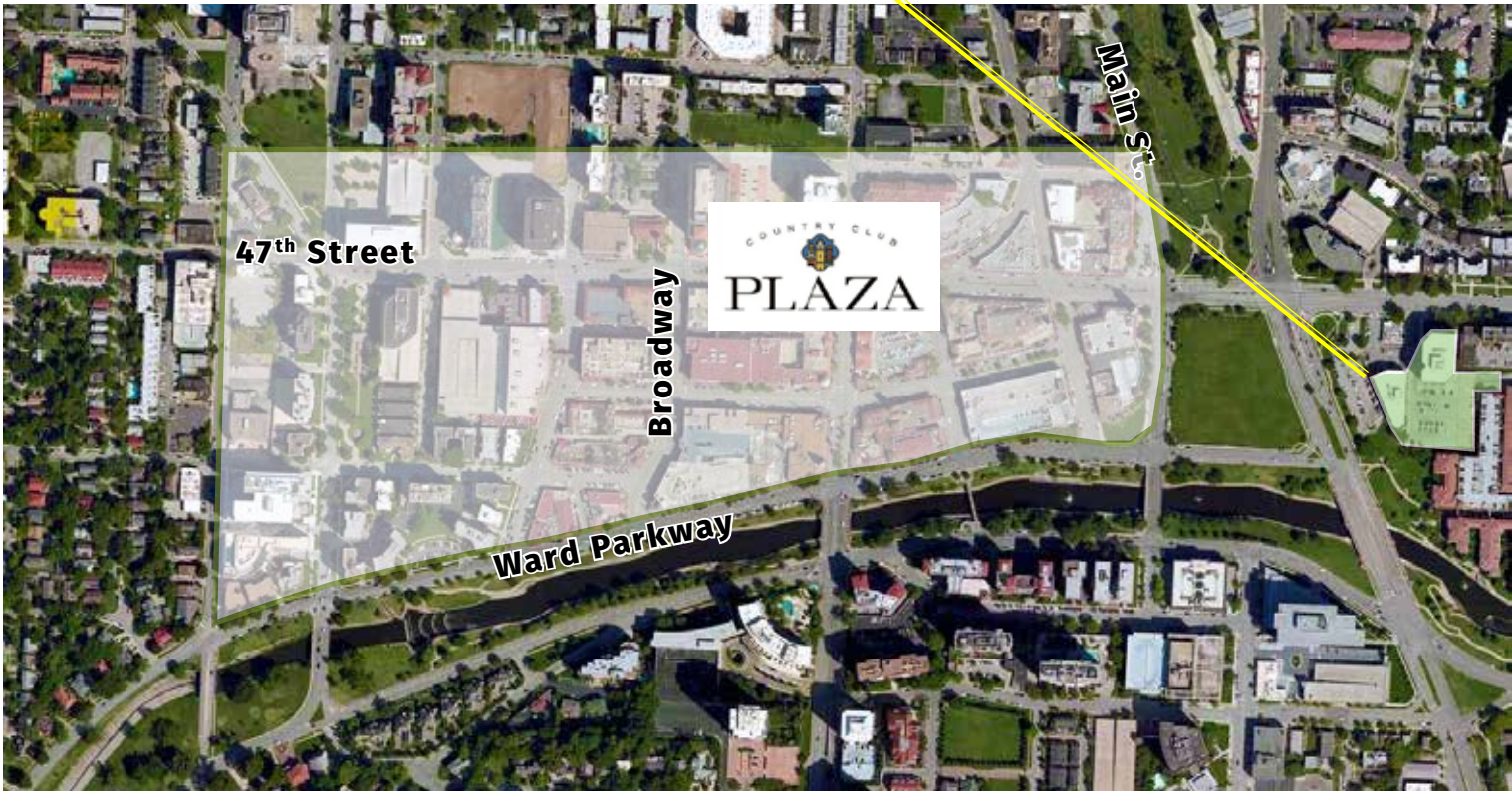


For Office Leasing Information:

Gregory W. Swetnam, Principal
816.936.8510 | gswetnam@kessingerhunter.com

Sharon Gartin, SIOR
816.936.8521 | sgartin@kessingerhunter.com





For Office Leasing Information:

Gregory W. Swetnam, Principal
816.936.8510
gswetnam@kessingerhunter.com

Sharon Gartin, SIOR
816.936.8521
sgartin@kessingerhunter.com



KESSINGER HUNTER
commercial real estate