

# PRAIRIE STAR II 6850 HILLTOP ROAD

SHAWNEE, KANSAS 66226

est. 1879

# KH

**KESSINGER HUNTER**  
commercial real estate

**AVAILABLE FOR LEASE**

**MEDICAL AND OFFICE SPACE AVAILABLE  
RANGING FROM 2,508 ± RSF — 7,500 ± RSF**



## PROPERTY FEATURES

- » Medical/Office space built in 2005
- » Located near the southeast corner of Midland and K-7 Highway
- » Ample parking

## SPACE AVAILABLE

- » 2,508 ± RSF – 7,500 ± RSF

**7,500± RSF Medical/Office  
space available with an  
outside entrance**

## BUILDING FEATURES

RENTABLE BUILDING AREA	24,749± RSF
BASE RENTAL RATE	\$19.00 NNN
LEASE TYPE	NNN

For more information, please contact:

**DEBBIE SCHULTE, SIOR**  
Principal, Office Brokerage  
816.936.8549  
[dschulte@kessingerhunter.com](mailto:dschulte@kessingerhunter.com)

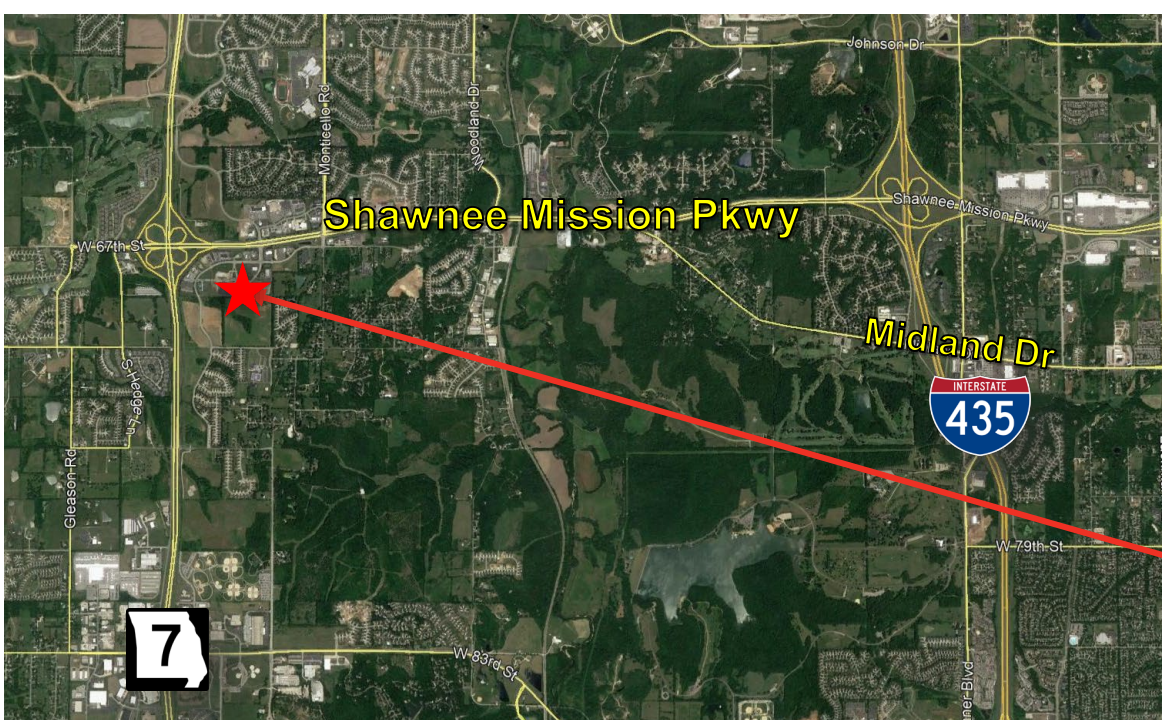
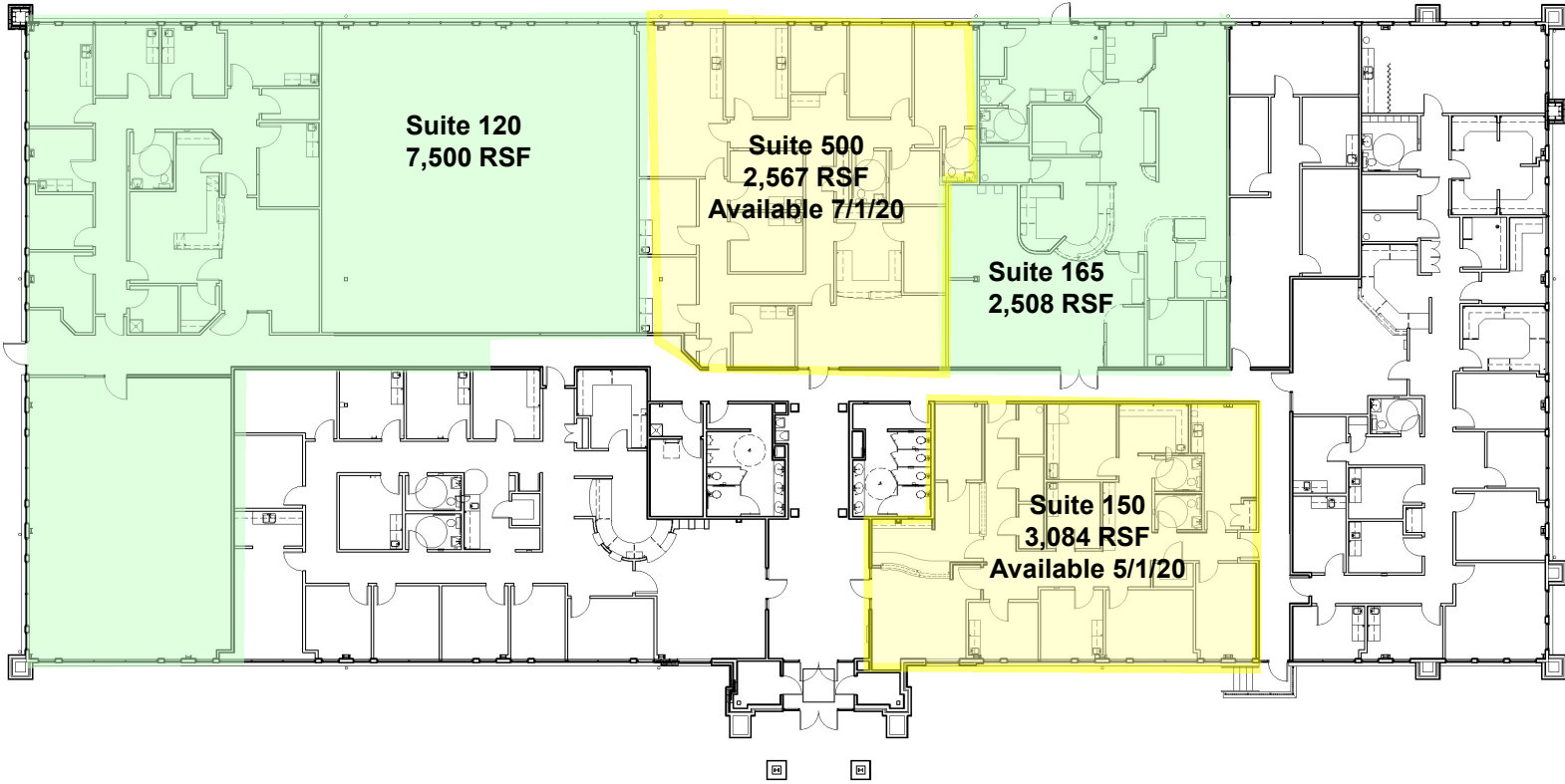
**THOMAS WARD**  
Office Brokerage  
816.936.8527  
[tward@kessingerhunter.com](mailto:tward@kessingerhunter.com)

**KESSINGER/HUNTER & COMPANY, LC**  
2600 Grand Boulevard, Suite 700  
Kansas City, MO 64108  
816.842.2690  
[www.kessingerhunter.com](http://www.kessingerhunter.com)

# PRAIRIE STAR II | 6850 HILLTOP ROAD

SHAWNEE, KANSAS 66226

est. 1879



**DEBBIE SCHULTE, SIOR**  
Principal, Office Brokerage  
816.936.8549  
dschulte@kessingerhunter.com

**THOMAS WARD**  
Office Brokerage  
816.936.8527  
tward@kessingerhunter.com