

I-35 LOGISTICS PARK

15250-15400 South Green Road
(155th Street & Old Highway 56)

OLATHE, KANSAS 66062



INDUSTRIAL FOR LEASE



Building B
821,663± SF

FEATURES

- Located 2.5 miles from new interchange at I-35 & 159th Street
- 50% tax abatement through 12/31/2023
- Foreign Trade Zone capable
- 8.5 miles north of BNSF's new 1,200-acre intermodal center
- 13 miles from the UPS, Lenexa facility
- 3 miles from the FedEx SmartPost facility
- I-35 Logistics Park is LEED® certified to the Silver level



PREMISES	70,000± SF - 158,517± SF
BASE RENTAL RATE	\$4.25 - \$4.50 PSF
LEASE TYPE	Net

FOR MORE INFORMATION, PLEASE CONTACT:

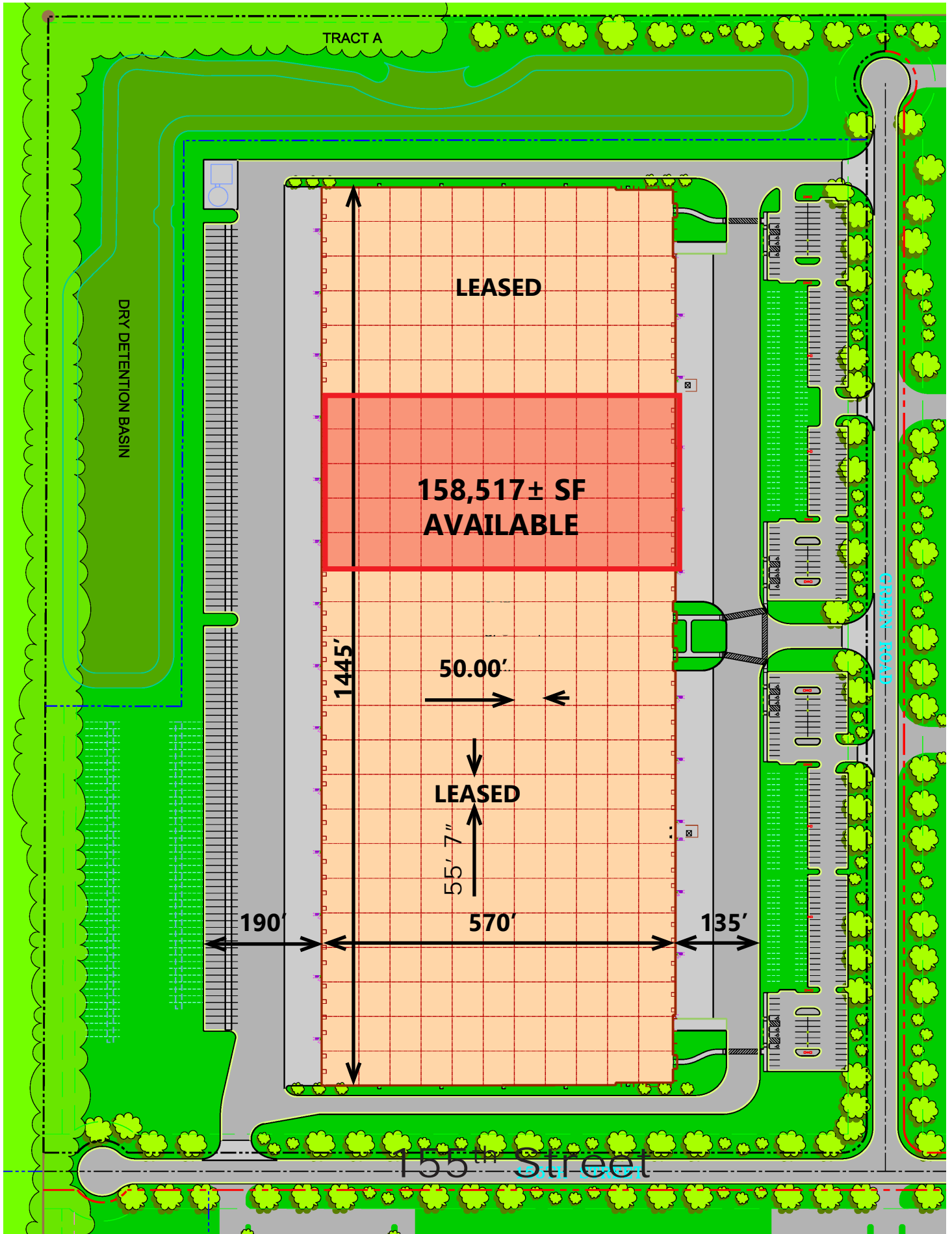
Daniel B. Jensen, SIOR
Principal, Director of Development
816.936.8505
djensen@kessingerhunter.com

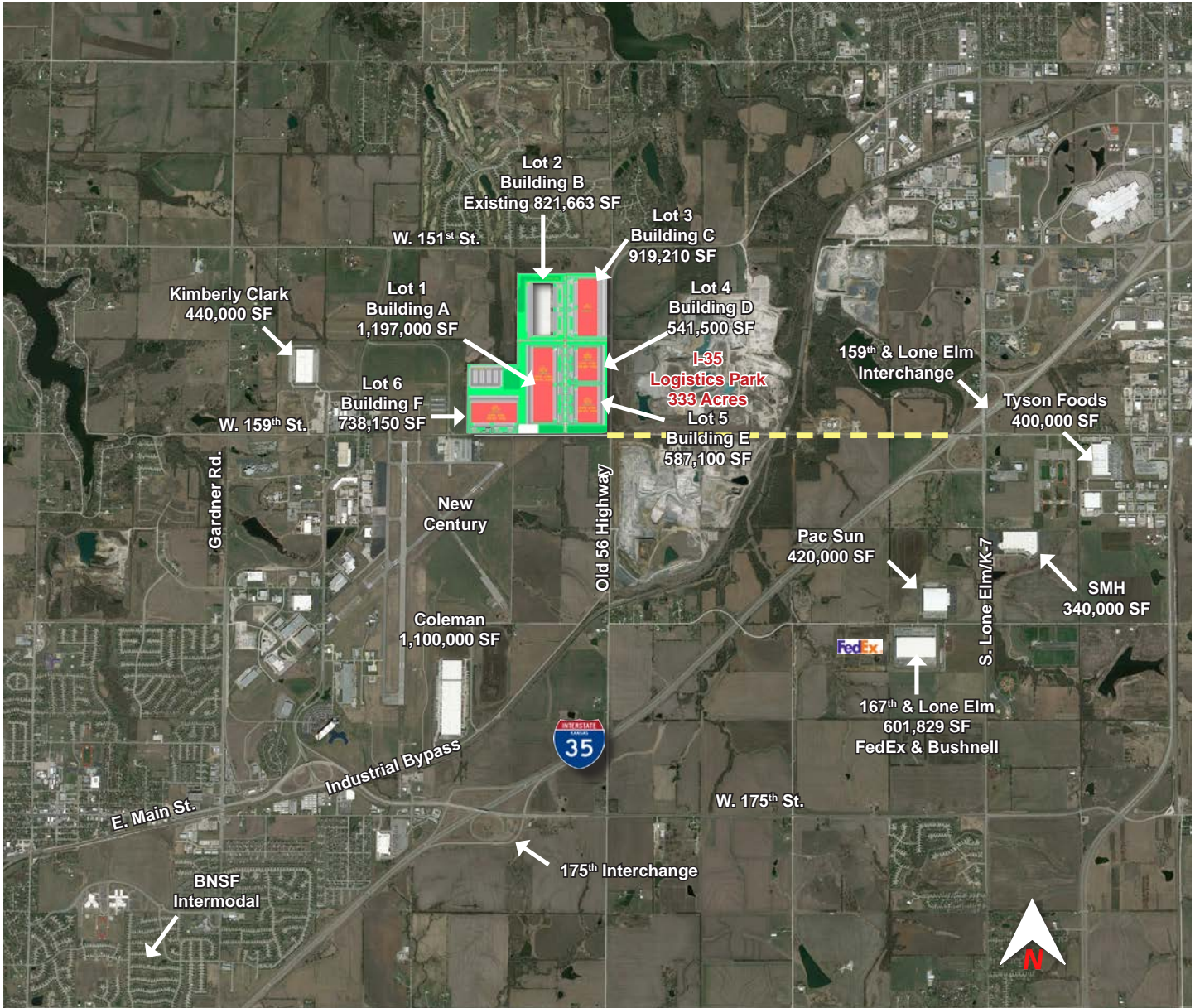
KESSINGER/HUNTER & COMPANY, LC
2600 Grand Boulevard, Suite 700
Kansas City, MO 64108
816.842.2690
kessingerhunter.com

SPECIFICATIONS

Available SF:	158,517± SF (Divisible as small as 70,000± SF)
Office SF:	Build-to-suit
Acreage:	48±
Zoning:	M-2
Bay Size:	55'7" E-W x 50' N-S (staging bays are 60') (1,445'± N-S x 570' E-W)
Ceiling Clearance:	32' to 36' clear
Sprinkler Type:	ESFR
Floor Thickness:	7"
Loading:	34 (9' x 10') dock-high doors
On-Site Trailer Parking:	18 spaces provided
Car Parking:	60 spaces provided
Power:	(2) 3,000 amp 480 volt 3-phase 4-wire
Roof:	White .60 mil, TPO R-20 Isocyanurate Insulation
Utilities:	Electric - Kansas City Power & Light Gas - Atmos Gas Water - Olathe City Water Sewer - Olathe City Sewer
Rate:	\$4.25 - \$4.50 PSF, NET
Tax:	\$.52± PSF 2014 (Inclusive of 50% tax abatement through 2023)
Insurance:	\$.05± PSF
CAM:	\$.20± PSF







SUPPORT SERVICES LOCATED WITHIN A 5-MILE RADIUS

HOTELS

Super 8 Gardner (3.0 miles)
 Days Inn Olathe Medical Center (3.1 miles)
 LaQuinta Inn & Suites Olathe (3.1 miles)
 Best Western Olathe (3.4 miles)
 Microtel Inn & Suites (3.5 miles)

RESTAURANTS

Applebee's (3.2 miles)
 Arby's (2.8 & 4.0 miles)
 A&W (4.5 miles)
 Burger King (2.8, 3.2 & 3.4 miles)
 Chili's (3.2 miles)
 Chipotle (3.2 miles)
 Culver's (4.0 miles)
 Domino's (3.0 & 4.5 miles)
 Freddy's (4.0 miles)

Goodcents (3.4 miles)
 Hardee's (2.6 miles)
 I-Hop (3.2 miles)
 Jimmy John's (3.2 miles)
 KFC (3.4 & 4.5 miles)
 Little Caesar's (4.5 miles)
 Long John Silver's (4.5 miles)
 McDonald's (2.8, 3.2 & 4.5 miles)
 Panda Express (3.4 miles)
 Papa Murphy's (3.4 miles)
 Papa John's (3.0 miles)

Pizza Hut (3.0 & 3.4 miles)
 Perkins (2.8 miles)
 Red Robin (3.2 miles)
 Sonic (2.6 & 3.4 miles)
 Starbucks (3.0 & 4.0 miles)
 Subway (2.6, 2.8, & 3.0 miles)
 Taco Bell (3.4 & 4.8 miles)
 Taco John's (4.0 miles)
 Waffle House (2.8 & 4.8 miles)
 Wendy's (3.2 & 4.8 miles)

FOR MORE INFORMATION, PLEASE CONTACT:

Daniel B. Jensen, SIOR
 Principal, Director of Development
 816.936.8505
 djensen@kessingerhunter.com